

Introduction

Passenger Information System is an automated system which displays the information in various languages, PIS are electronic image displays those present multiple static advertisements on a rotating basis. Ajeevi digital billboard displays images that can be changed at defined time interval. Ajeevi digital billboards can be used for advertising, or can also serve public service purposes.

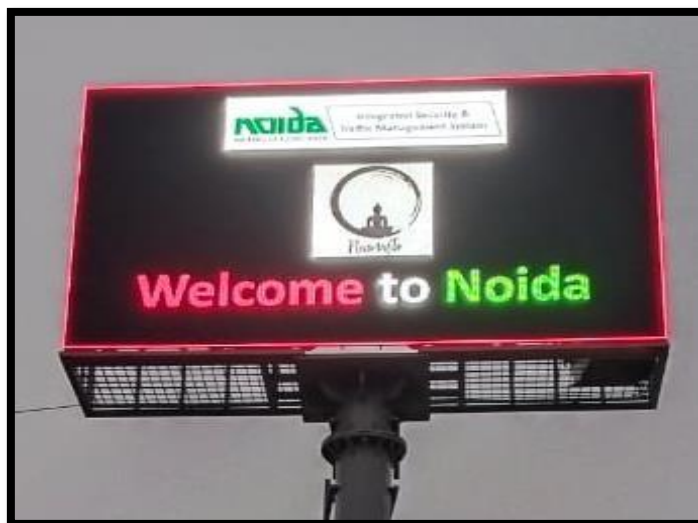
Features

- Design with high quality LED
- Fresh colors and high brightness
- High refresh rate
- High gray scale and high color uniformity
- High protection grade of IP65, waterproof / dustproof
- Special industrial design heavy duty cabinet

- High impact creative that is sure to amaze, excite, delight, and connect with your target audiences

Uses

- PIS are strategically placed along busy roads and intersections, which mean people will always be looking at your large and eye-catching display.
- Can be used for increasing customer base by increasing brand awareness
- Can be placed inside a building, to work as a directory, guiding customers to different offices and locations
- Outdoor signage are excellent ways to tell people about your business and what you represent
- Round the clock display available on screen
- Can be used to work as informative display to show citizen specific information in Smart Cities.



Technical Specifications

Sr. No	Parameter	Value
Physical Parameters		
1	Display size	Multiple Size available
2	Power plant and battery housing	Available
General Parameters		
3	Operating Temperature	0°C~50°C
4	Electrical Characteristic	U = 230V; 50 HZ +10%, I=4A, P=920W
Technical Parameters		
5	Communication access support	2G,3G,4G, LTE, Wi-fi,5G etc.
6	Microcontroller	Arm 32-bit Microcontroller, 64kb Program memory, 20kb RAM.
7	Types of Display Supported	Video, pictures, text, graphics, clock, weather, temperature
8	Pixel density	4 mm Pixel Pitch
9	Type of pixels	Full matrix type with RGB pixel
10	Pixel Configuration	P10 DIP/SMD LEDs
11	Brightness control	Red, Green and Blue 14-16bits/each.
12	Brightness	5000 cd brightness
13	Refresh Rate	≥1920Hz
14	MTBF	>10000 hours
15	Life span on 50% Brightness	≥100000 hours
16	Ingress Protection	IP65 both sides
17	Certification	CE, RoHS, BIS