



Digital Technology Provider

Inogators

[Invention + Integration]

IOT Devices

City Wide Application

Integrated Central Command Center

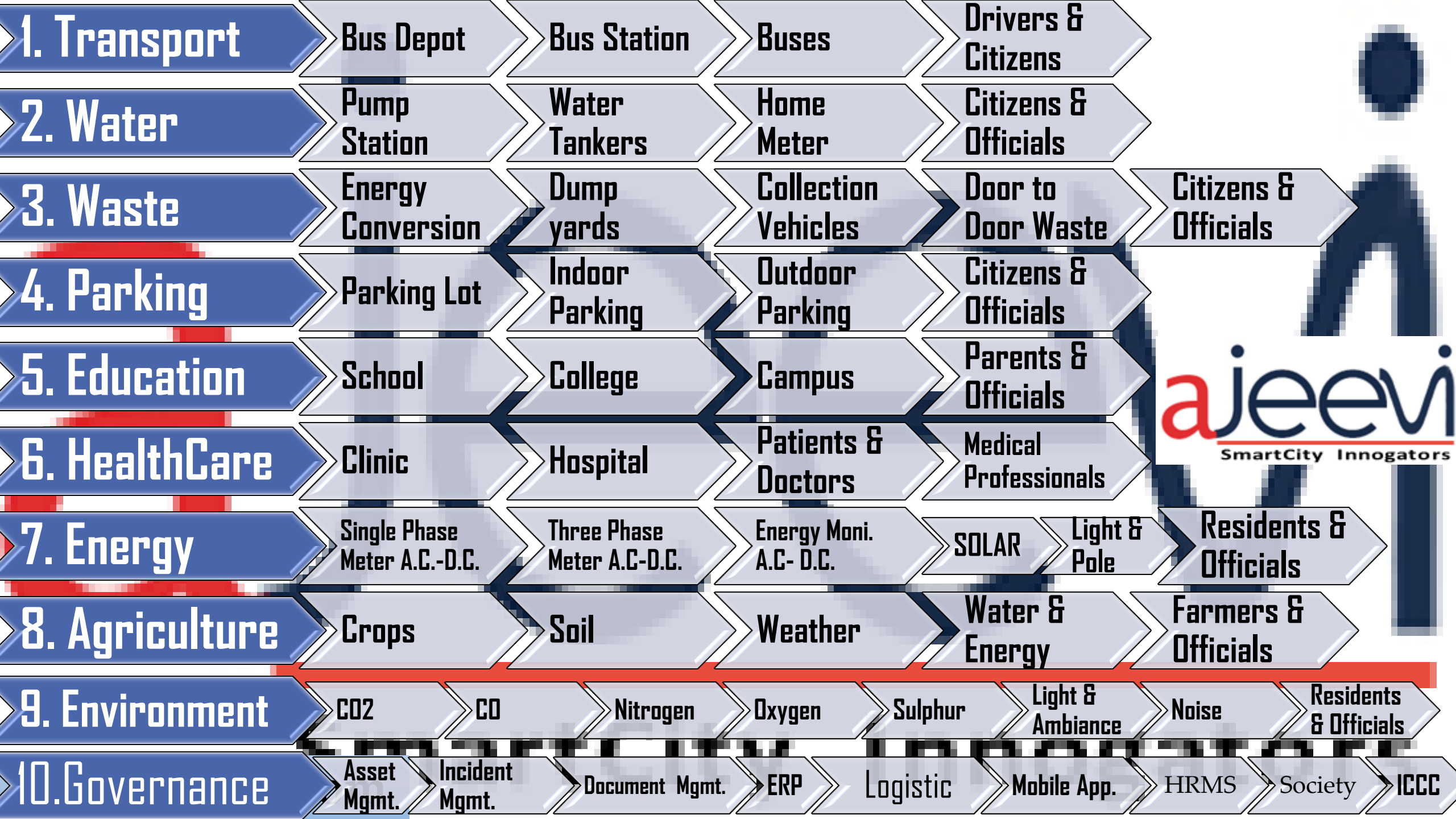
Web Applications

Mobile Applications

AI / BI / Edge

Industrial Automation





ajeevi®

Digital Technology Provider

AJEEVI
Presence





Digital Technology Provider

GPS

GPRS

Handheld RFID

Bin Level
Sensor

Energy
Monitor[A.C /
D.C]

Environment
Sensor

Variable
Messaging
System

Water Meter

RFID Tags/
UHF Reader

Street Light
[A.C. / D.C]

Technology

• ASP.NET, C#, XSLT, XML, ASP, VB, VC++, C, C++, VBA (MS Office), Java, JSP, Crystal Reports

Modeling Tools

• Rational Rose, Visio 2000

Databases

• Oracle, MS SQL Server

Architecture & Frameworks

• J2EE, Microsoft .NET, COM/DCOM, Win DNA, Web-Services, SOA

Application Servers

• MTS, Windows 2000 with .NET Framework, MQ Series, MSMQ, MS BizTalk

Operating Systems

• Linux, Unix, Windows NT, Windows 2000

Design Tools

• Adobe Photoshop, Adobe Illustrator, Adobe Page Maker, Macromedia Flash, Fireworks, Dreamweaver, Director, 3D Studio Max, Corel Draw

Quality Tool

• Six Sigma, TQM, CCPM, Lean

Methodologies

• Light Weight : Agile, DSDM, SCRUM, XP, FDD Heavy Weight : V-Model, I-2, Prototyping

Azure Platform

Platform Services

Security and Management

- Portal
- Active Directory
- Multi-factor Authentication
- Automation
- Key Vault
- Store/Marketplace
- VM Image Gallery and VM Depot

Compute

- Cloud Services
- Service Fabric
- Batch
- Remote App

Web and mobile

- Web Apps
- API Apps
- API Management
- Mobile Apps
- Logic Apps
- Notification Hubs

Developer services

- Visual Studio
- Azure SDK
- Team Project
- Application Insights

Hybrid Operations

- Azure AD ConnectHealth
- AD Privileged Identity Management
- Backup
- Operational Insights
- Import/Export
- Site Recovery
- StorSimple

Integration

- Storage Queues
- Riztalk Services
- Hybrid Connections
- Service Bus

Analytics and IoT

- HDInsight
- Machine Learning
- Data Factory
- Event Hubs
- Stream Analytics
- Mobile Engagement

Data

- SQL Database
- SQL Data Warehouse
- Redis Cache
- Search
- DocumentDB
- Tables

Media and CDN

- Media Services
- Content Delivery Network (CDN)

Infrastructure Services

Compute

- Virtual Machine
- Containers

Storage

- BLOB Storage
- Azure Files
- Premium Storage

Networking

- Virtual Network
- Load Balancer
- DNS
- Express Route
- Traffic Manager
- VPN Gateway
- Application Gateway

Legend

★ = In preview at Azure Stack GA

1.Transport					
2.Water					
3.Waste					
4.Parking					
5.Education					
6.Energy					
7.Environment					
8.Governance					

1. Smart Transport

Bus Automation

Real time Information inside and about Buses IP based Camera and GPS

Route Optimization , AVL Real time tracking of the bus, MEMO

Mobile Application for Drivers to report incident and breakdown

Bus Stop Automation

Real Time information at Bus stop, ETA to Bus stop

Variable Sign Boards, Kiosks using led or kiosk Stands

Mobile application telling bus stop and time to coming of Bus for Citizen

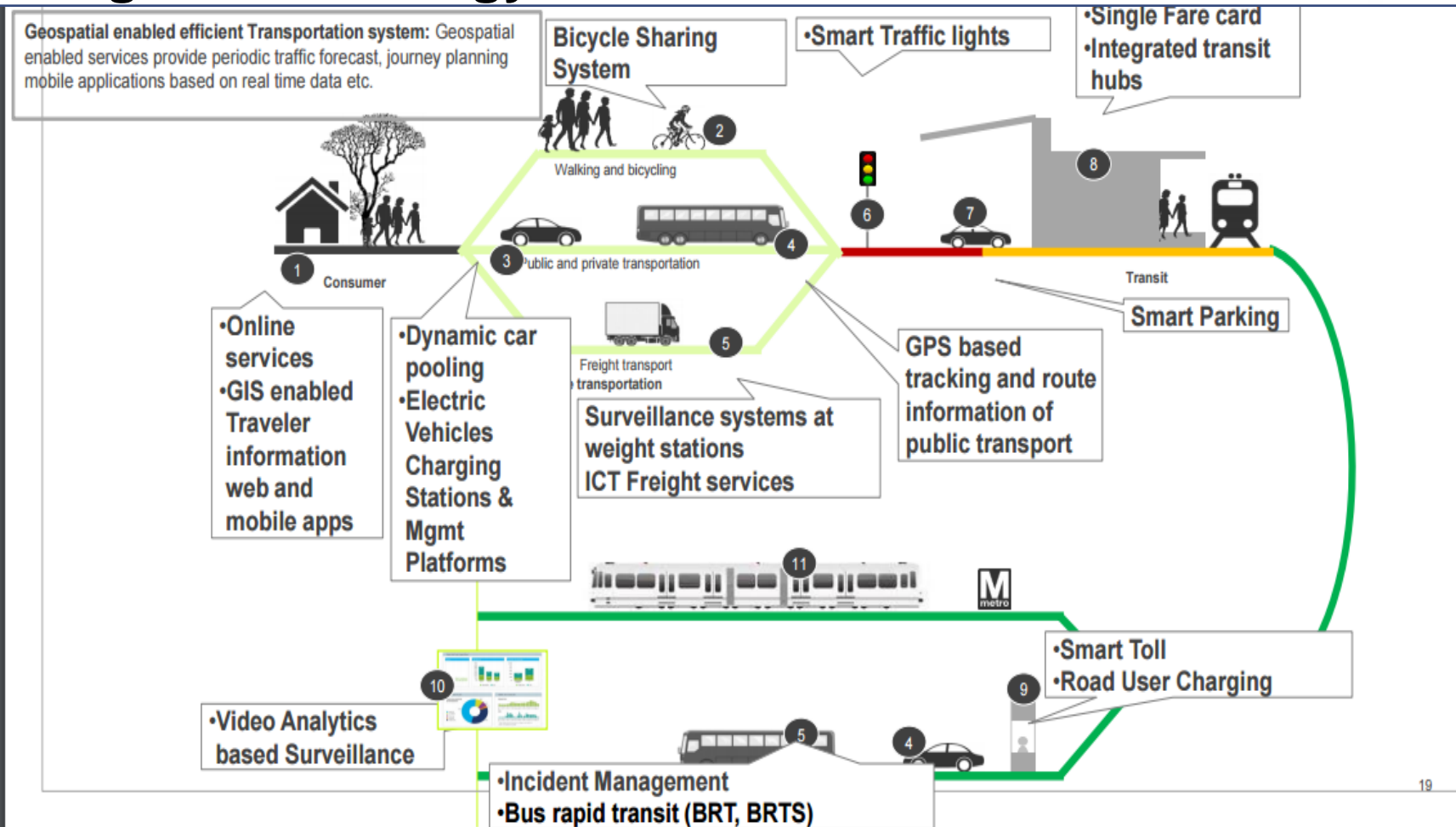
Bus Depot Automation

Incident, Accident, Breakdown, Court and challan

Driver Registration, Educational Check, Reference Check, Account Details

Driver Behavior Analysis Duty Assignment, Driver Penalty

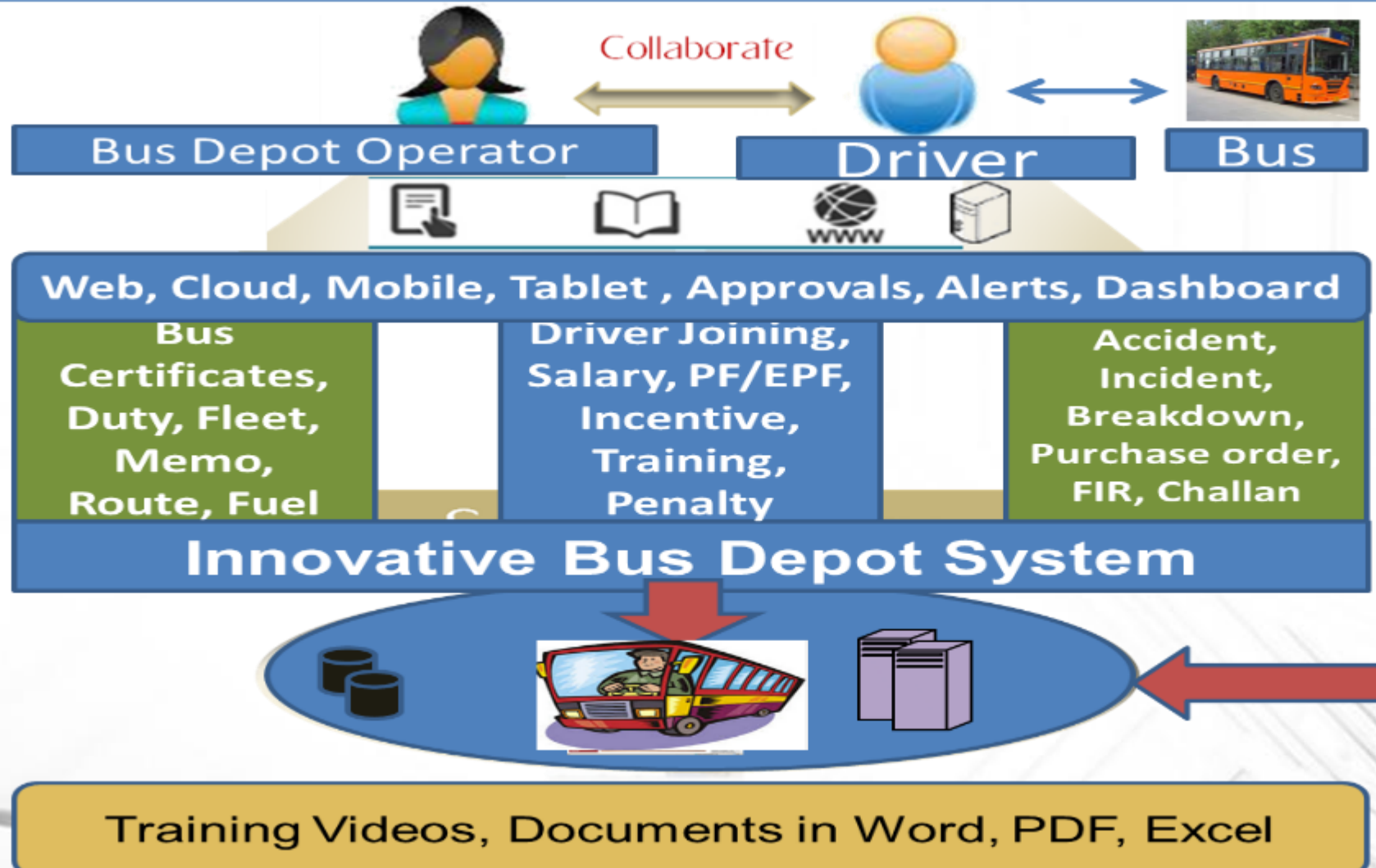
Memo generation, Perform Fleet, Fleet Generation Purchase Order, GRN, Part Ident, Inventory, Part



AVLS + PIS + VMS + FCS + ETL [GPS, CAMERA, Boom Barrier, UHF Reader]

1. Smart Transport

Architecture



24 X 7, 7 days Support

Bio Metrics Punch Card, GPRS, CCTV

Spare Parts, Route Wise Bus Details, Monthly / Daily Comparison,, Trip Disqualify

Email, Schedule / Actual/Miss Km, Miss Trip, Duty Roaster, Route Earning, Spare Duty, Bu History, KMKG ,Operation Performance, Daily Bus Lost KM, Comparison Statement, Revenue Loss



Digital Technology Provider

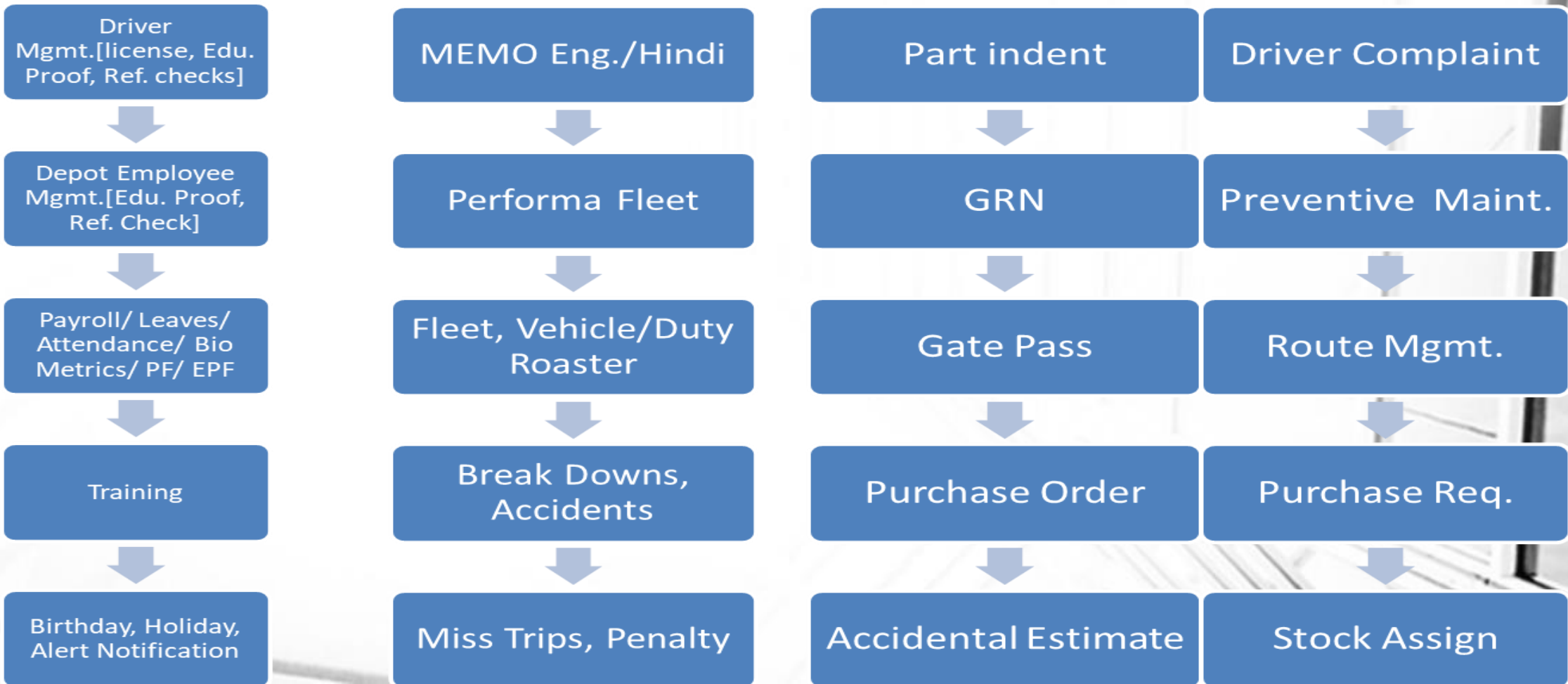
1.Smart Transport

Architecture

Smart Bus Depot

Technology Provider

IOT/BIO METRICS, RFID CARD,
GPS/GPRS/ Tablet, Computers





Digital Technology Provider

1.Smart Transport

Features



Driver License, Medical Certificate, Pollution, CNG, Bus Fitness



RELIABLE ERP TO MANAGE LARGE & SECURE FLEETS

OPERATIONS

- Performa FLEET
- FLEET CREATION
- Memo Generation
- Vehicle Roaster
- Duty Roaster
- Reports...

MAINTENANCE

- Checklist
- JobCard Creation
- Purchase Order
- Fuel Average
- Court & Challan
- Reports...

WAREHOUSE

- Part Request
- Purchase Order
- Stock In
- Part Assignment
- Part Reorder
- Reports...

EMPLOYEE

- Employee Pre-Registration
- Employee Registration
- Payslip
- Leave Holiday Policy
- Incentive Bonus
- Reports...



Digital Technology Provider

1. Smart Transport

Implementations



Using the automation and services of an ERP software product, one can only get the desired results in numerous benefits to the streamlining and efficiency of organisation. CRM software can provide all this in an interface with customers offering latest data, information and possible changes. All retail sales and managing for the customer available options helps the end-user traveler in ascertaining their journey or holiday. A PSD recognizes this potential advantage of the IT system. Without the help of a channel partner and Helpdesk there can be more confusion than reserving the right to use resources from the division or state end. Central use of automated software is optional converse to the functional benefit which is evident from state use of IT CRM or ERP so we must engage more services resident from the PTD automated Green IT solutions.

1st to implement modernised public transport management system in Delhi.



HOURS
18,000
of modernising public transport

BUSES
217
registered under this system

JOURNEYS
6,35,100
monitored

Seems Puri
Bus Depot [160] Buses

Raj Ghat Bus
Depot [115] Buses

Sama Printer [450] Buses

Belagavi [150] Buses

**REVENUE
SAVED**

**SIMPLE
AND
EFFECTIVE**

The system has been running for over 2 years with Antony Road Transport Solutions P. Ltd. in a DMTS-depot, Balok, New Delhi, India and they have been more than satisfied with the management. They have recorded substantial growth in their revenue.

REAL-TIME

Find all the vehicles currently on-duty, off-duty, fit or unfit. Get there locations, stopages, certificates and other details of vehicles at any time.

ANALYTICS

Reports of damages, waitings, revenue, fuel, penalties, employees, payments and much more are displayed in daily, weekly, monthly and annual basis for analysis.



FUEL

Know when it's the right time for re-fill and the correct amount to spend on fuel



CLUTCHES

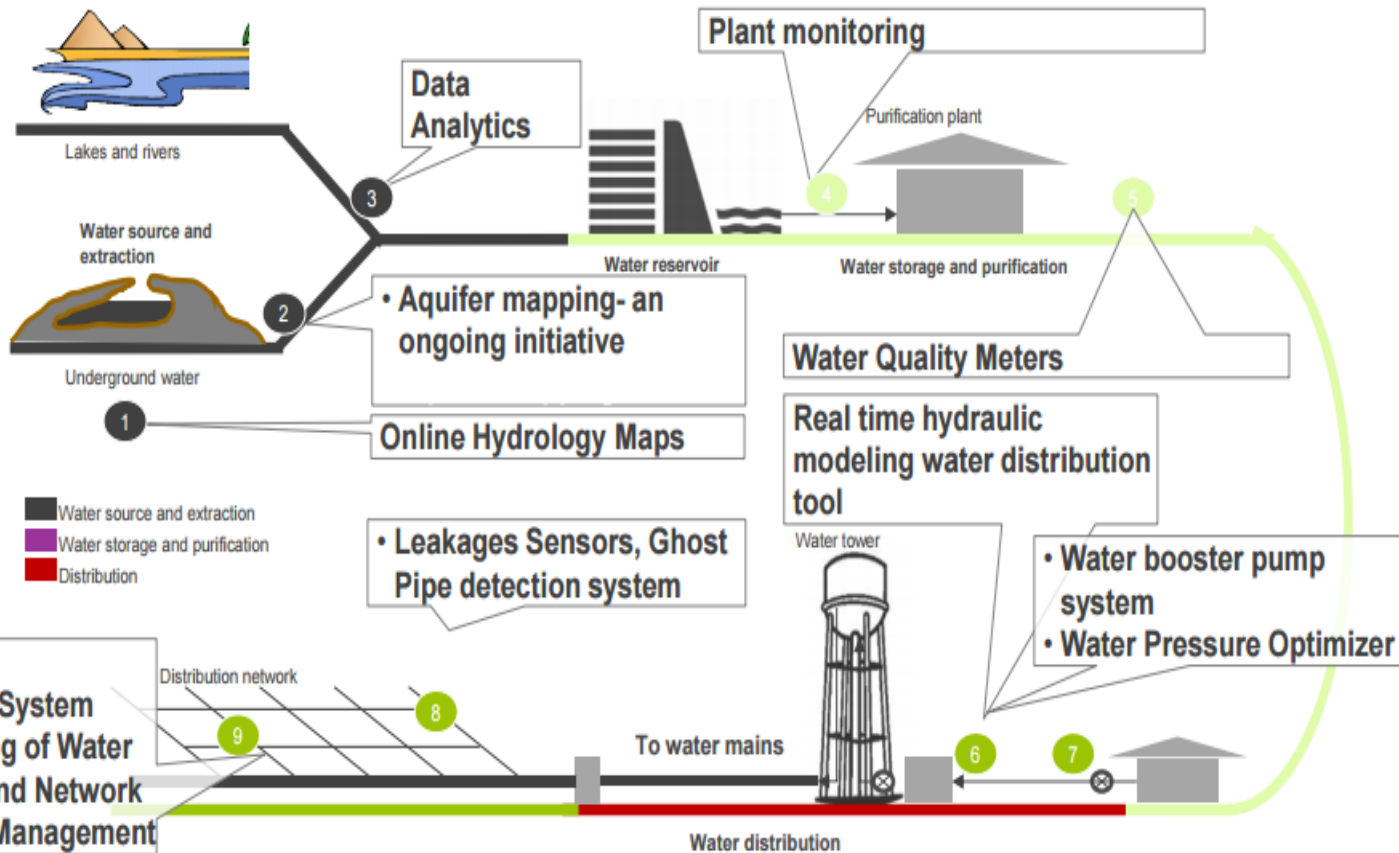
Know when to repair the clutches so as to avoid buying new clutches regular



TRYES

Get notified about when to retread the tyre on time and save on buying a new one

2.Smart Water



Mobile App enabling to Start and Stop the Motors

Mobile app for Over head Reservoirs or underground reservoirs

Auto Shifting of Water Motors

Solenoid based Water Sensors

Real time info of Tank Filling

Chlorine Mixing

DG Set Monitoring Check

Data Analysis

Domestic Bill Generation

Mobile Device

Water Filling Levels

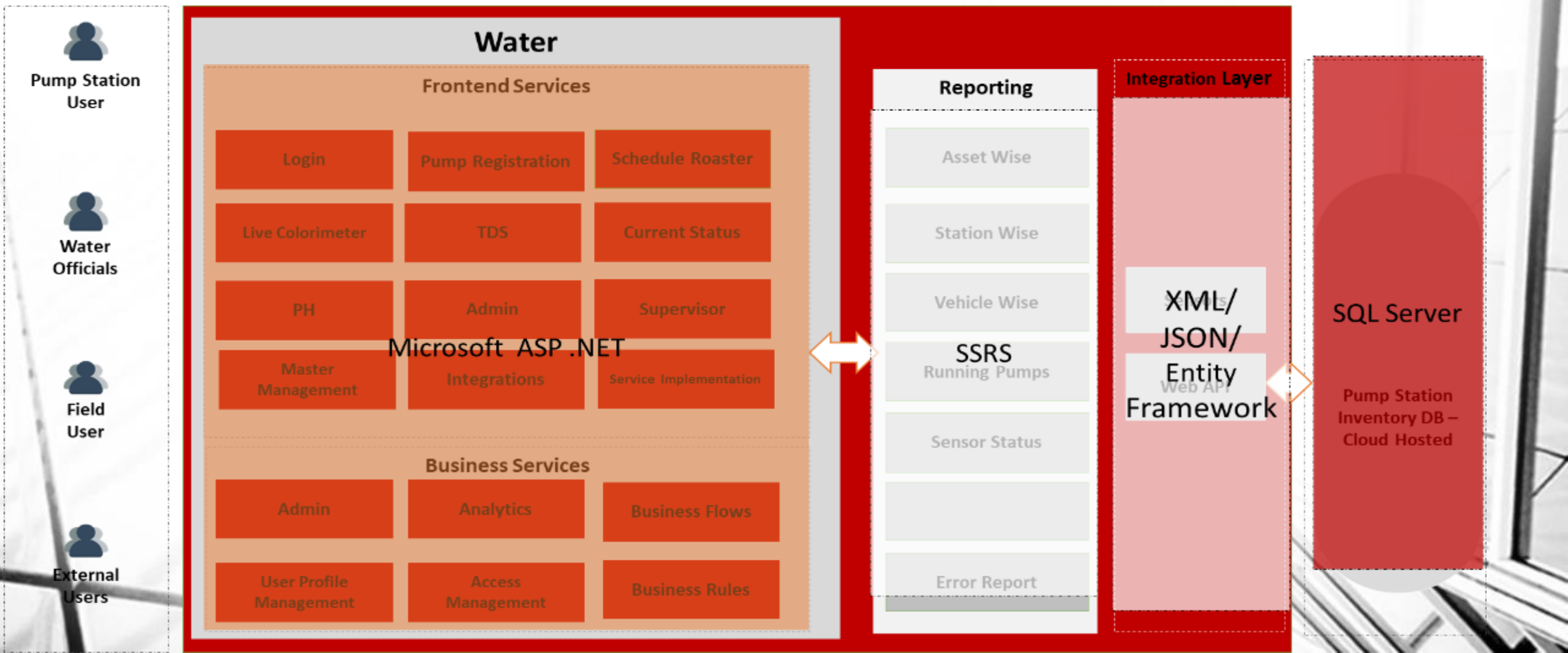
Flow Meter + Chlorine + TDS + PH + Domestic Water Meter



Digital Technology Provider

2.Smart Water

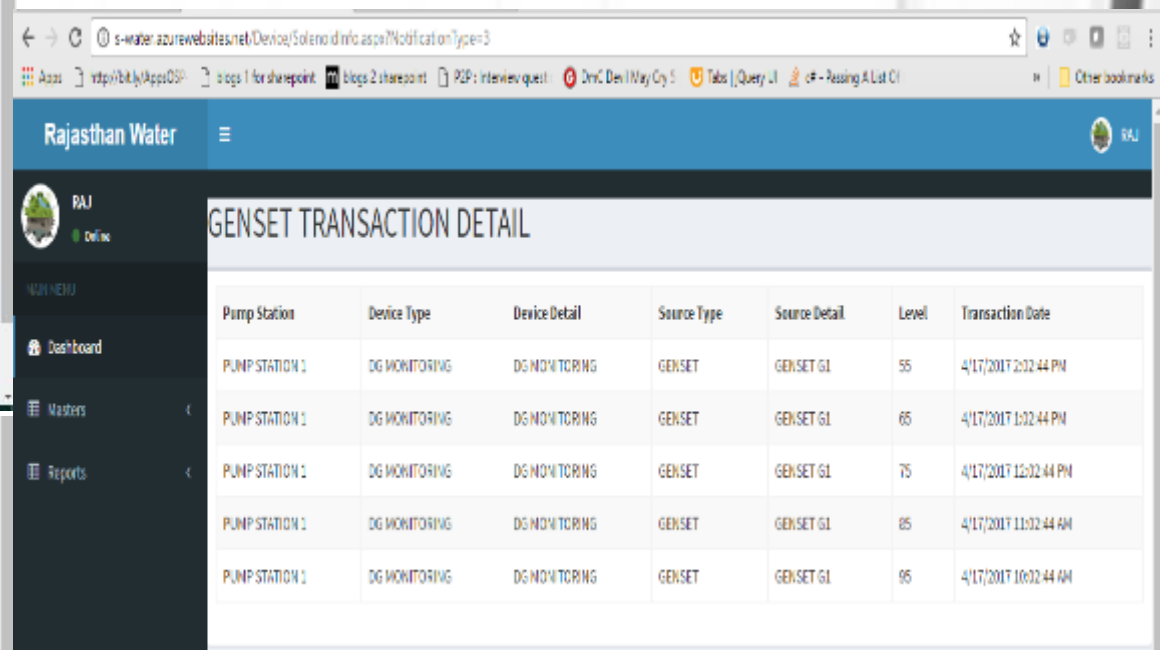
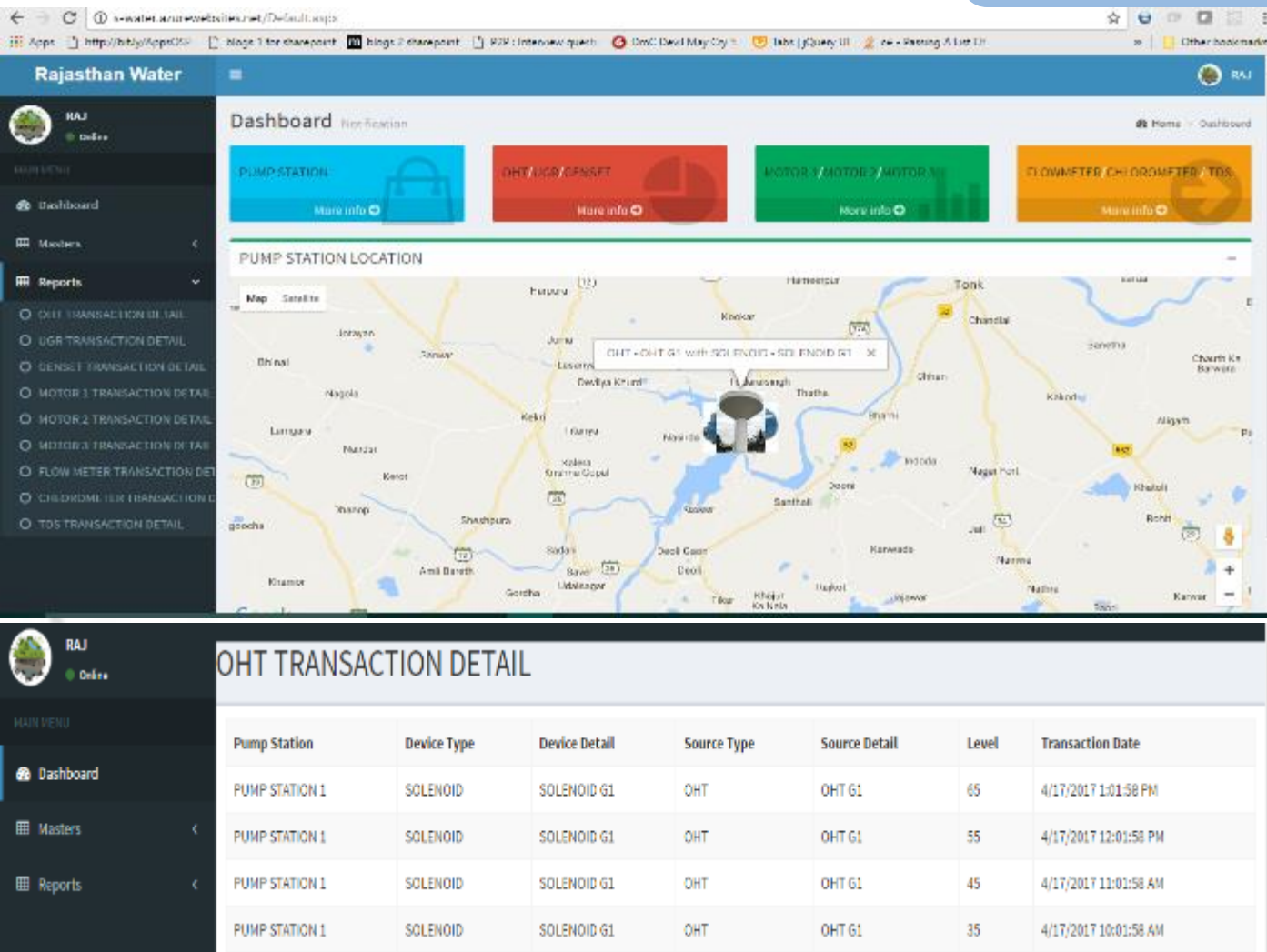
Architecture





2.Smart Water

Features



2.Smart Water Implementations



contact@ajeevi.com
www.ajeevi.com
+91-8375963034



Greater Noida Industrial Development Authority
• GREATER NOIDA CITY - PLANNED WITH AN OBSESSION •



ONLY water supply management system for
OVERHEAD AND UNDERGROUND TANKS IN WHOLE OF NOIDA REGION

2 YEARS

OF TOP-NOTCH TECHNOLOGY
WITH trust, experience,
and innovation
unchallenged leadership

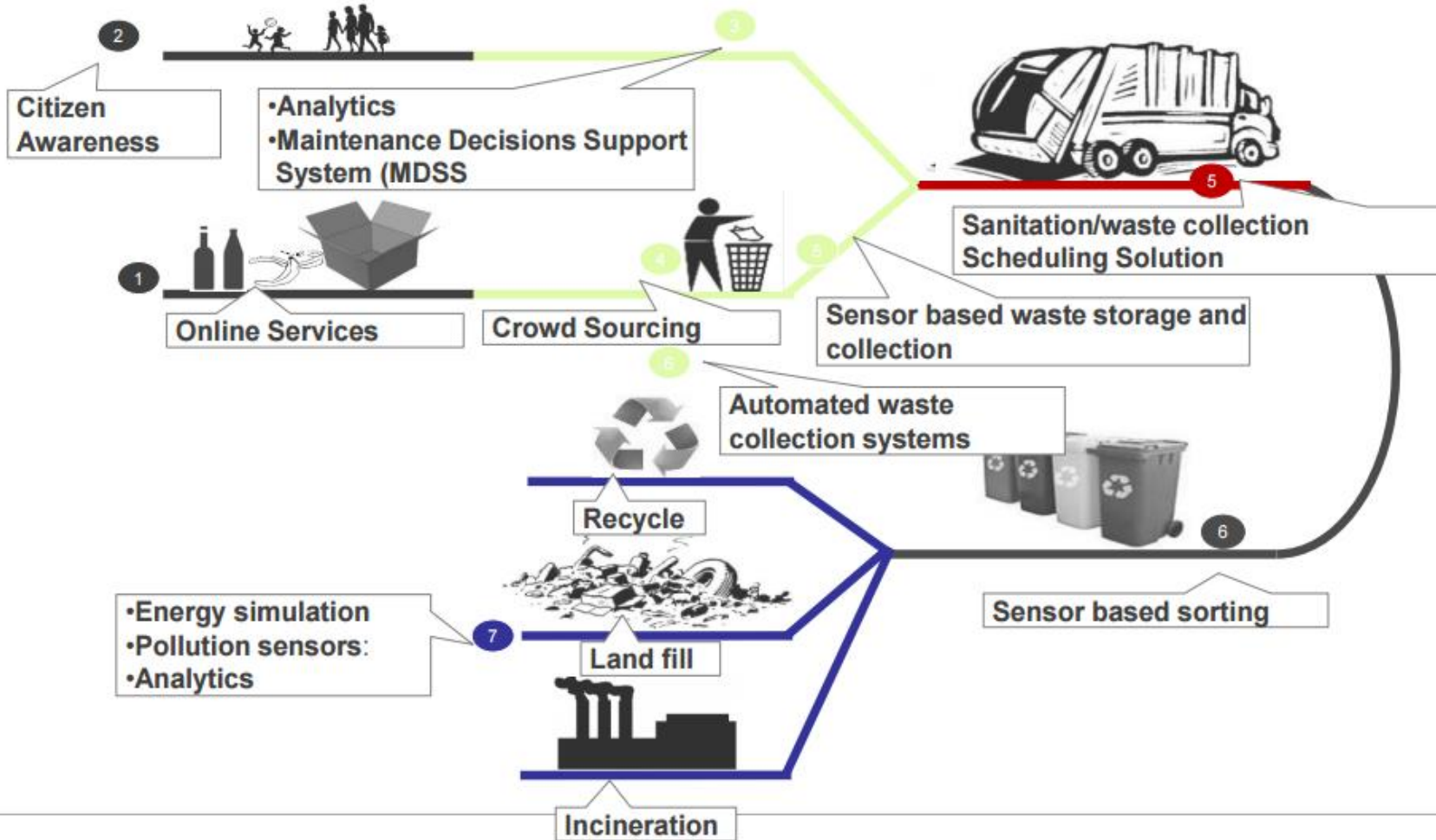
Timely availability of clean water at city or district level remains always a challenge for the civic bodies. We have analysed the problem in detail, and created an integrated solution named **"Integrated Electronic System for Water Reservoir"**.

Greater
Noida[UGR]-
12

Greater Noida
[OHT] 15

Belagavi

3.Smart Waste



Vehicle Monitoring

Manage Routes and Vehicle dynamically ,Monitoring and tracking of Vehicle

Vehicle Certificates , Registration, CNG, Fire, Fitness

Real time Information inside and about Vehicle IP based Camera and GPS

Route Optimization , AVL Real time tracking of the Vehicle

Mobile Application for Drivers to report incident and breakdown

Manage content on Truck Display Signboard

Garbage Points

Real Time information of Missed Garbage Points in Real Time based on speed and distance

Mobile application telling garbage points

Waste Collection Bins

Monitoring and management of Waste Collection Bins

RFID Readers , GPS Device Unit

Alert signal to City operation Center ,Volume sensing notifications

3.Smart Waste

Architecture



3.Smart Waste

Architecture





Digital Technology Provider

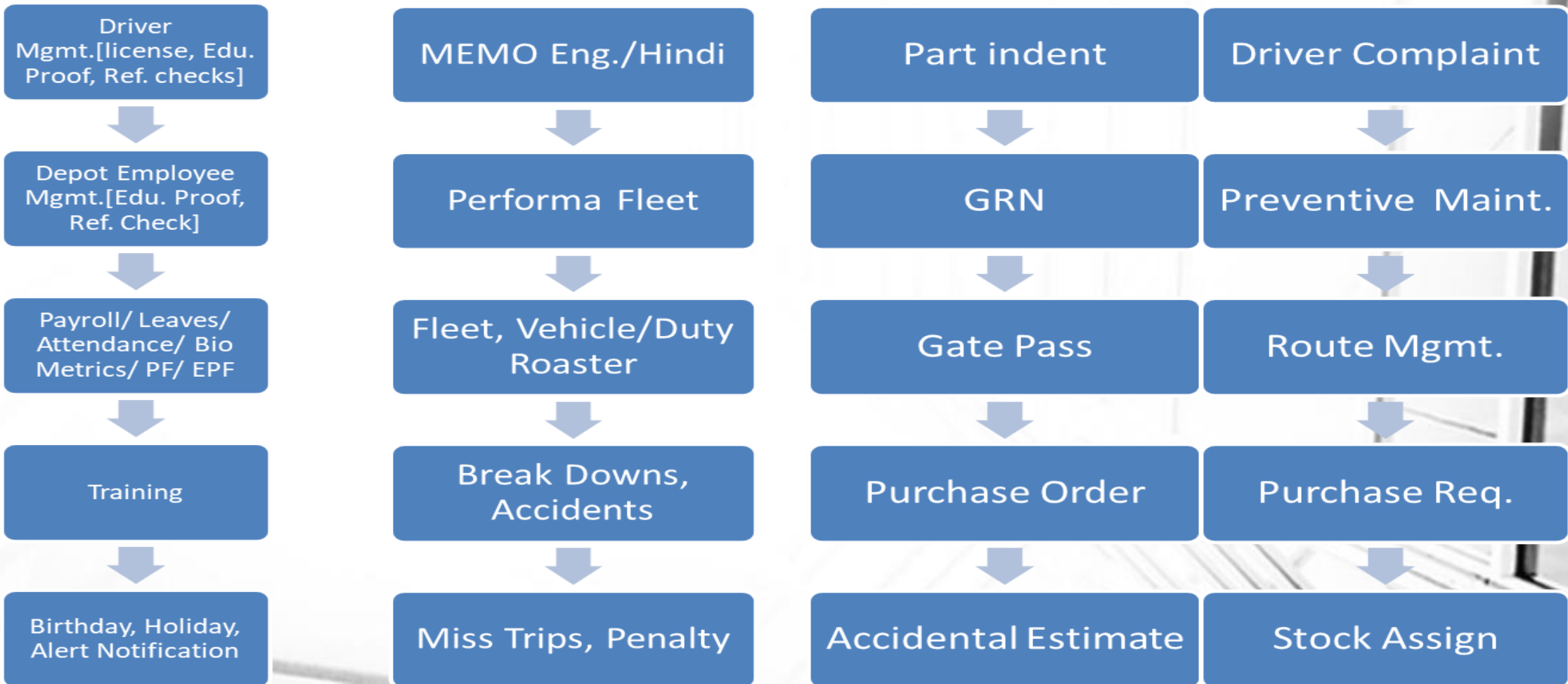
3.Smart Waste

Architecture

Smart Waste Management

Technology Provider

IOT/BIO METRICS, RFID CARD,
GPS/GPRS/ Tablet, Computers

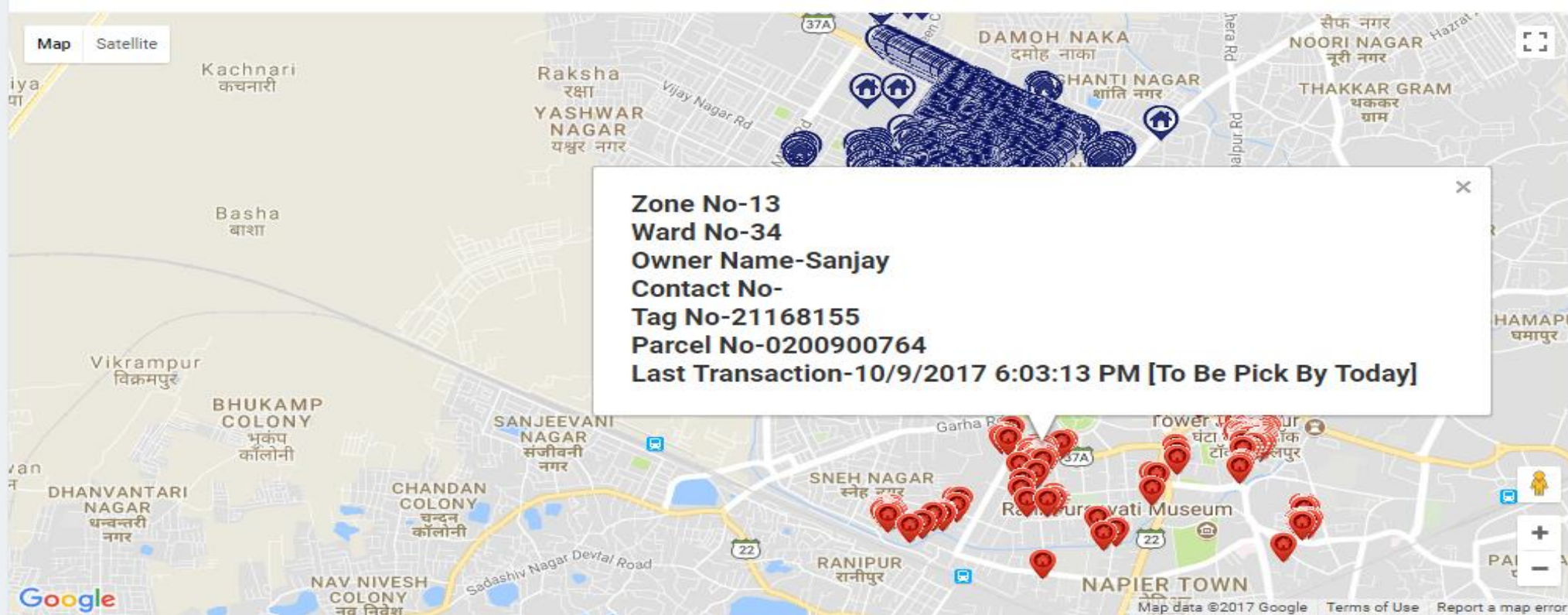




Digital Technology Provider

3.Smart Waste

Implementations



Jabalpur[2176
Houses, 250 Bins],
GIS, ICC

Delhi[UHF Reader,
Tags] Mobile &
Web App

Maharashtra[UHF
Reader, Tags]
Mobile & Web App

53
Bins



50064
Houses



5185
Garbage
Points



4.Smart Parking

Bus: [AVL]

Real time Information inside and about Buses IP based Camera and GPS

Route Optimization , AVL Real time tracking of the bus, MEMO

Mobile Application for Drivers to report incident and breakdown

Bus Stop

Real Time information at Bus stop, ETA to Bus stop

Variable Sign Boards, Kiosks using led or kiosk Stands

Mobile application telling bus stop and time to coming of Bus for Citizen

Bus Depot – Fleet Management System

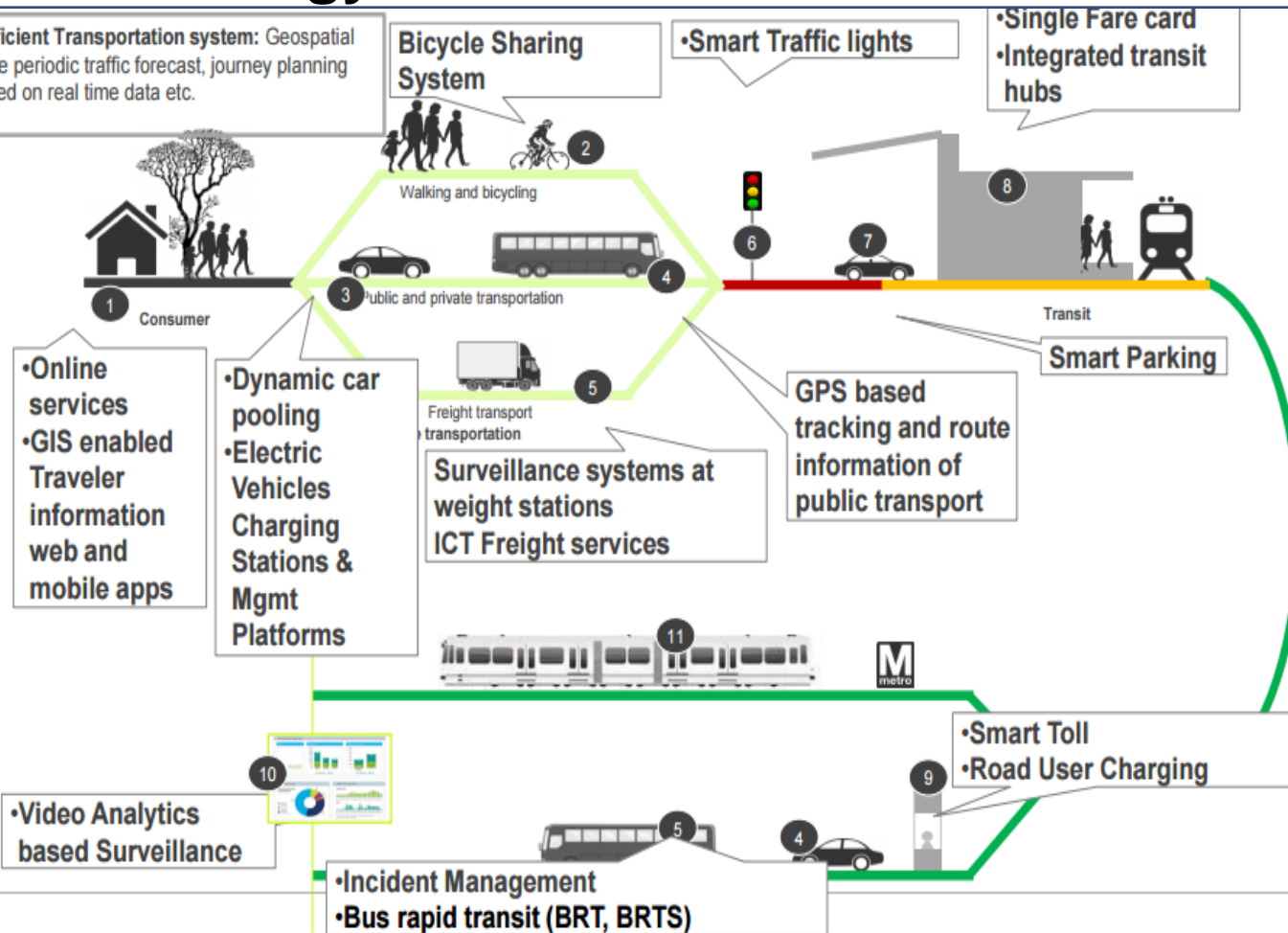
Incident, Accident, Breakdown, Court and challan

Driver Registration, Educational Check, Reference Check, Account Details

Driver Behavior Analysis Duty Assignment, Driver Penalty

Memo generation, Perform Fleet, Fleet Generation Purchase Order, GRN, Part Ident, Inventory, Part Request

Geospatial enabled efficient Transportation system: Geospatial enabled services provide periodic traffic forecast, journey planning mobile applications based on real time data etc.



AVLS + PIS + VMS + FCS + ETL [GPS, CAMERA, Boom Barrier, UHF Reader]

4.Smart Parking



Contactus@ajeevi.com

9654323500

Bus: [AVL]

Real time Information inside and about Buses IP based Camera and GPS

Route Optimization , AVL Real time tracking of the bus, MEMO

Mobile Application for Drivers to report incident and breakdown

Bus Stop

Real Time information at Bus stop, ETA to Bus stop

Variable Sign Boards, Kiosks using led or kiosk Stands

Mobile application telling bus stop and time to coming of Bus for Citizen

Bus Depot - Fleet Management System

Incident, Accident, Breakdown, Court and challan

Driver Registration, Educational Check, Reference Check, Account Details

Driver Behavior Analysis Duty Assignment, Driver Penalty

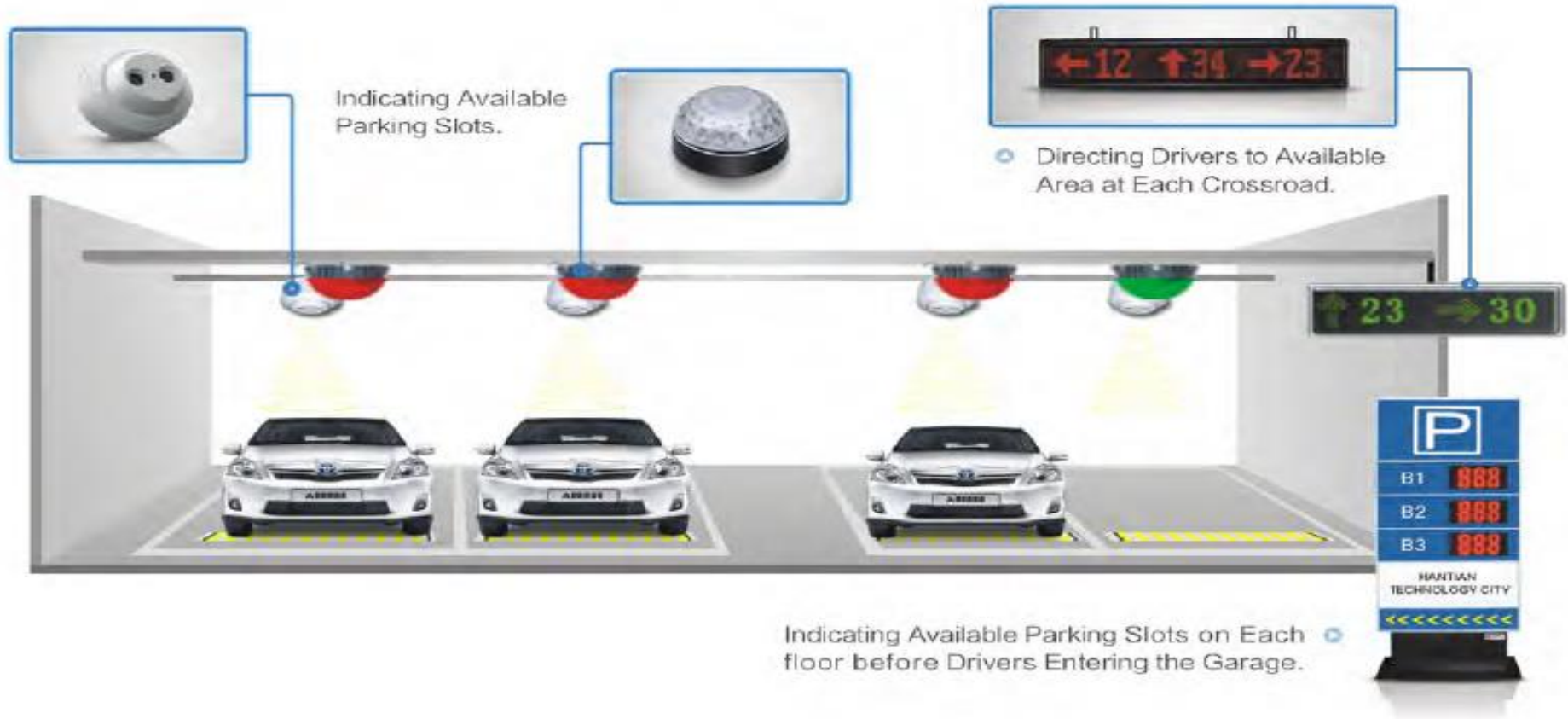
Memo generation, Perform Fleet, Fleet Generation

Purchase Order, GRN, Part Ident, Inventory, Part

AVLS + PIS + VMS + FCS + ETL [GPS, CAMERA, Boom Barrier, UHF Reader]

4. Smart Parking

Architecture



Indoor + Outdoor Parking [GPS, CAMERA, Boom Barrier, UHF Reader]

4.Smart Parking

Features

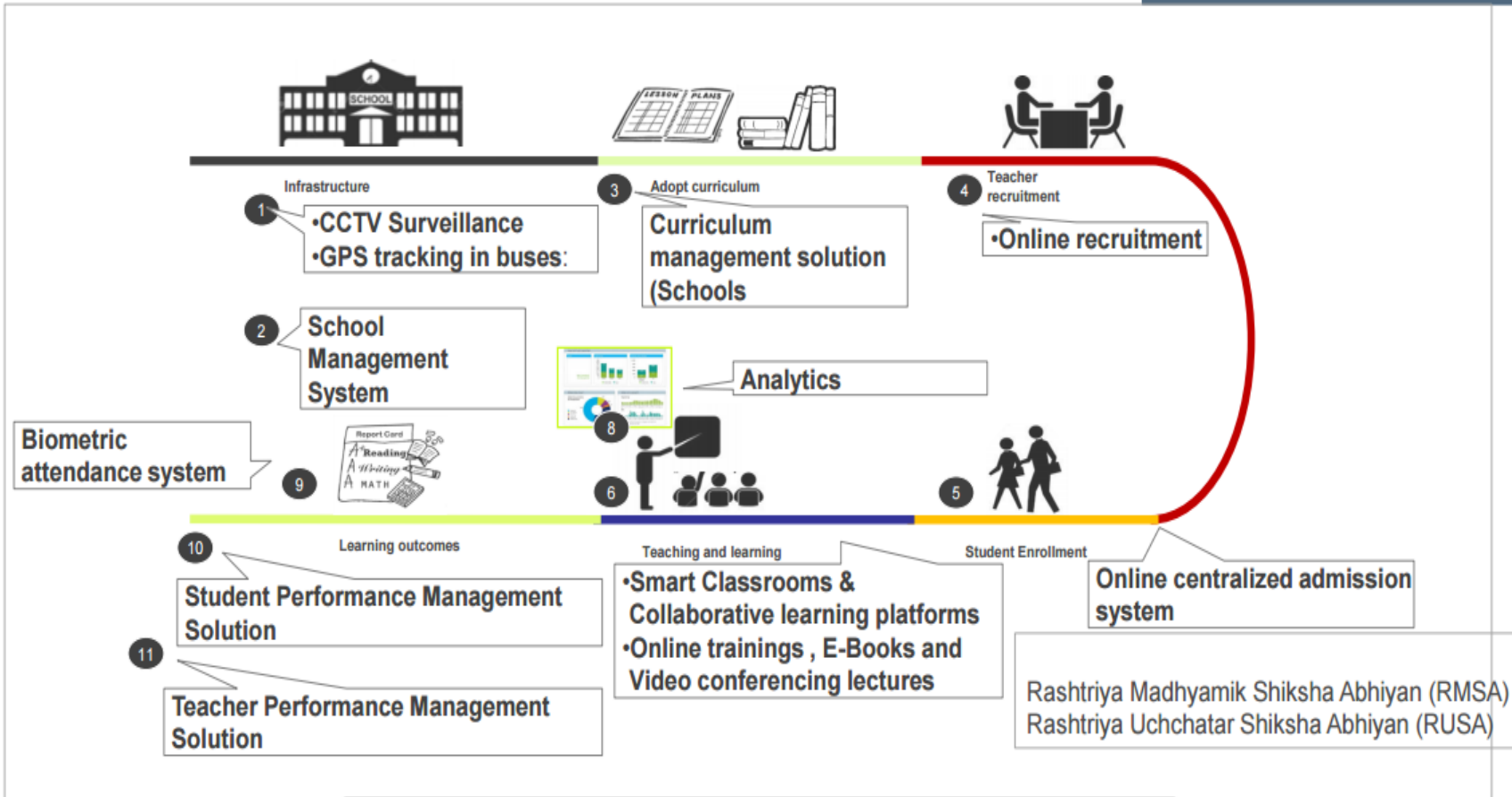
Infosys

TWO WHEELER PARKING	2A	XXX
LGF CAR PARK	2B, 2C, 2D	XXX
UGF CAR PARK	2E, 2F, 2G	XXX
SDB 1 : CAR PARK		XXX
SDB 1 : TWO WHEELER		XXX

Infosys

LGF - TWO WHEELER PARKING	1A	XXX
LGF - CAR PARK	1B , 1C	XXX
UGF - GENERAL PARKING	1D, 1F	XXX
UGF - RESERVED PARKING	1E	XXX
SDB 2 : CAR PARK		XXXX
SDB 2 : TWO WHEELER		XXX

Indoor + Outdoor Parking [GPS, CAMERA, Boom Barrier, UHF Reader]



Mobile App enabling to School Material Distribution

Mobile app for Parents School Teachers

School Rating Portal

Review, Compare, apply for Schools
School Backed Process, Admission, fees Payment, registration, hostel, transport, library

Data Analysis

Embedded Web Server

Mobile Device

Student Safety Security

School ERP

Student Registration, Admission

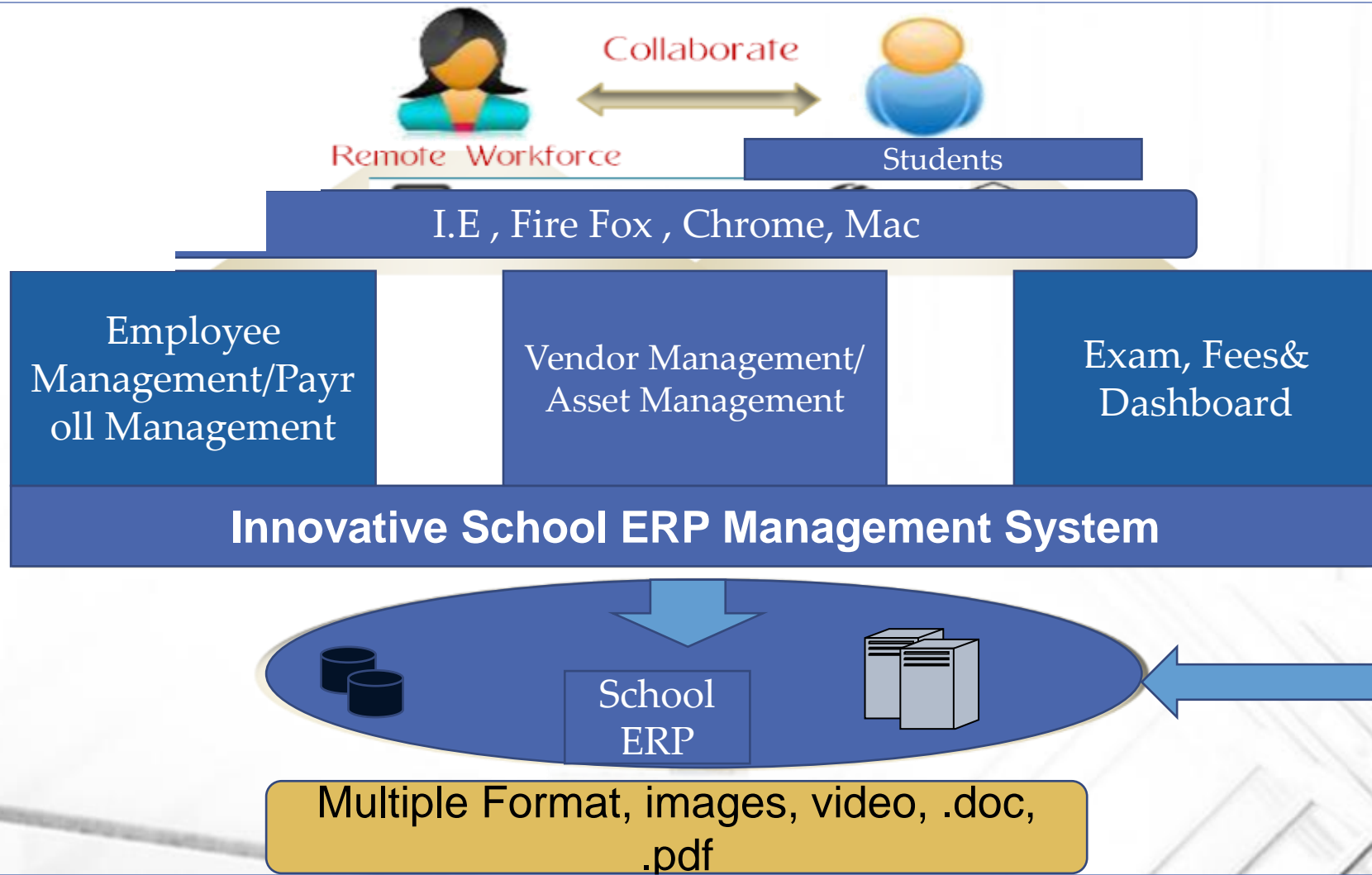
Course Syllabus, Duty Roaster



Digital Technology Provider

5.Smart Education

Architecture



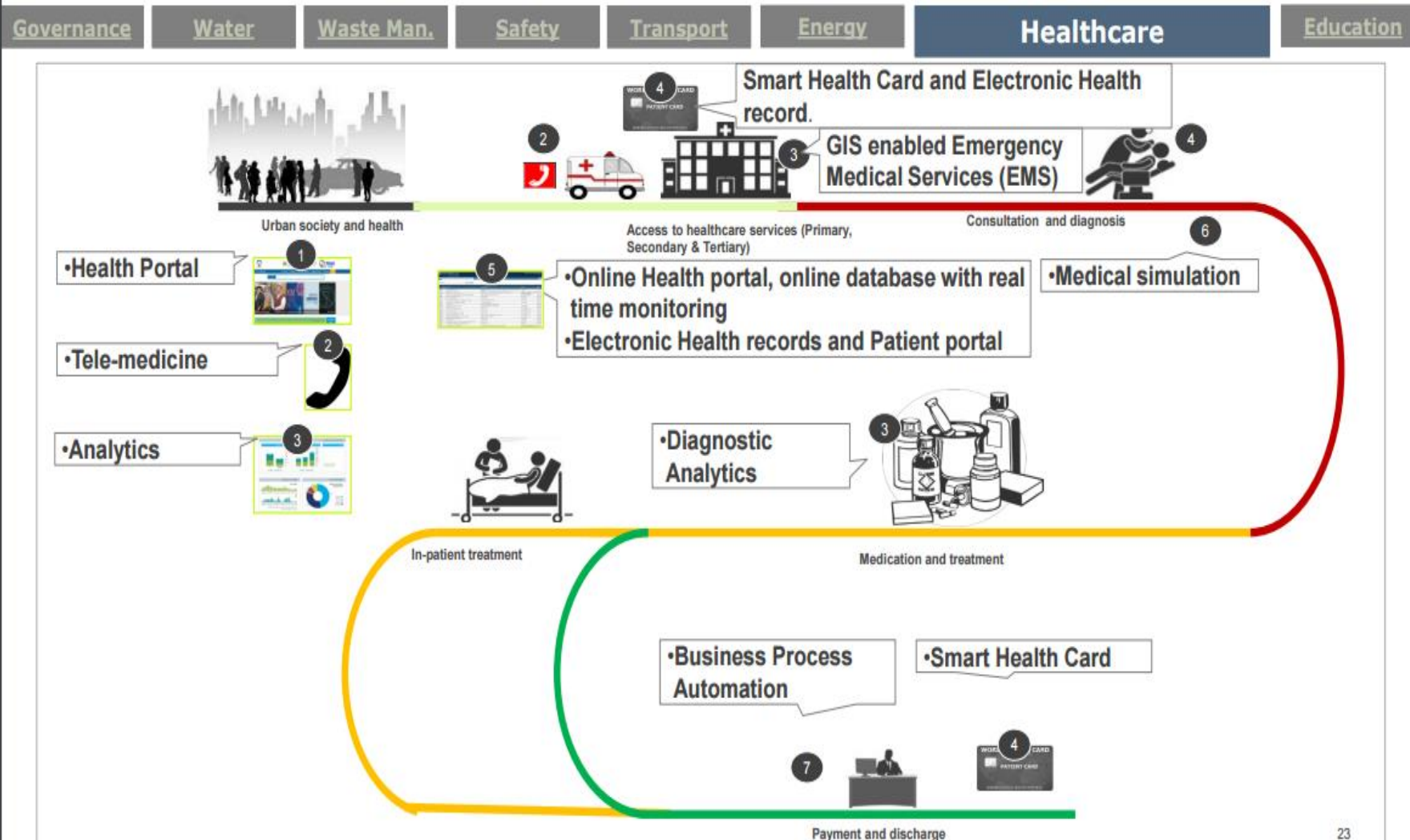
24 X 7, 7 days Support

Punch Card, Bio Metrics

Employee Details, Salary Details, Attendance Details, Leave Details,
Bonus & Incentive Calculation, email, SMS

Rich Interface, Web Based, CMS, Less customization,
Audit Trail, Web Analytics, Content Syndication,
Direct Email, Error Handling, System
Administration, Identity Management, Modular,
Data Classification,

Mobile App enabling registration and Booking of Test



Web application-ERP for Hospitals

Web Application for Health Care Centers

Attendance Management

Patient Management

Appointment Booking

Data Analysis

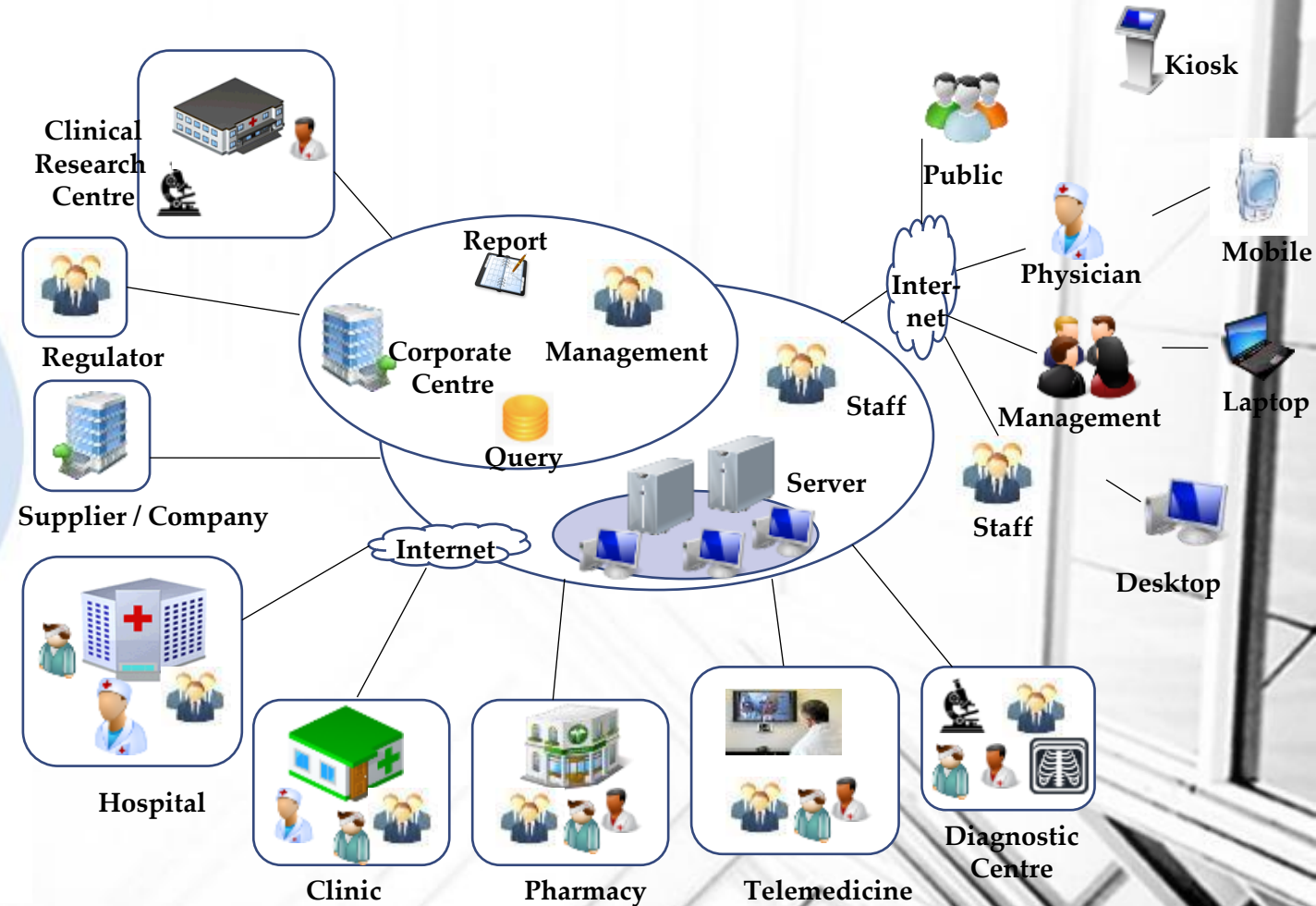
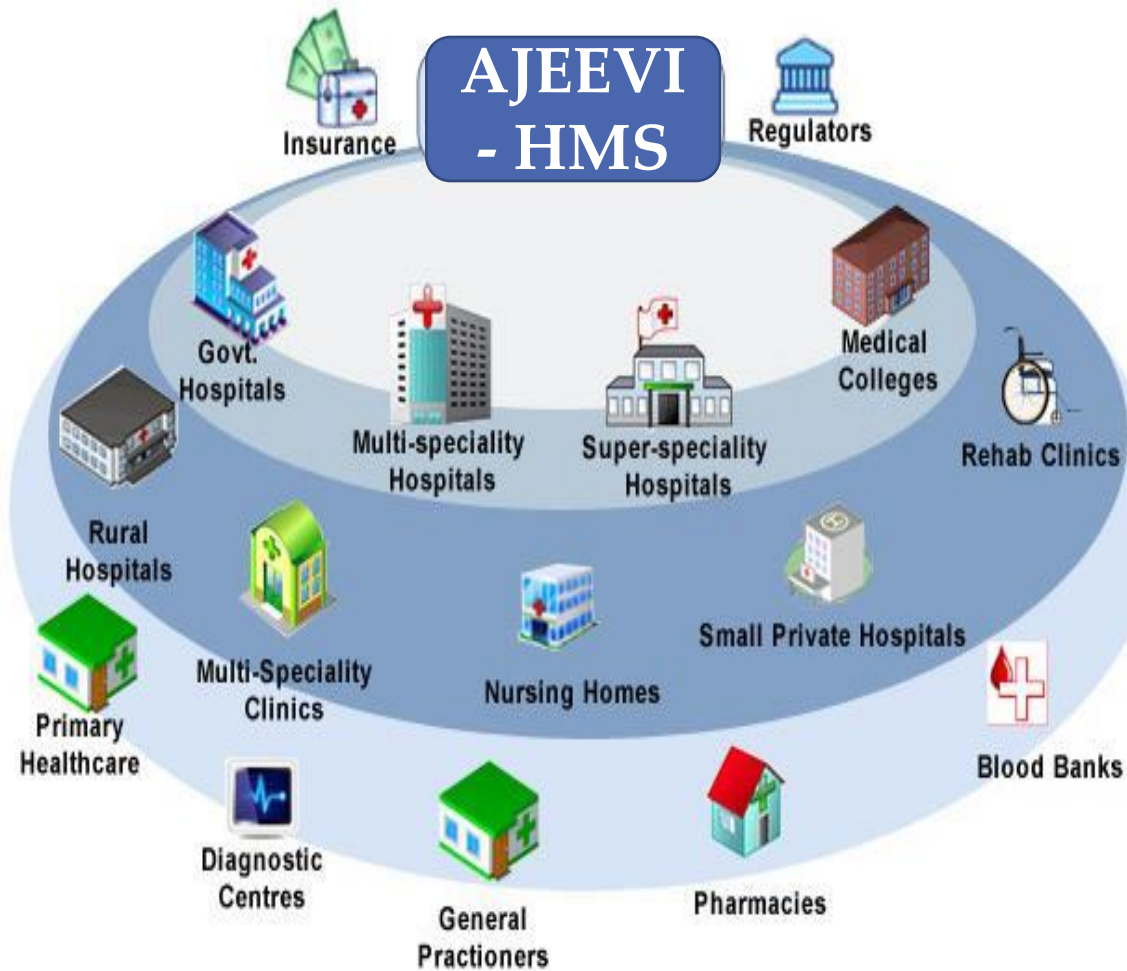
AVLS + PIS + VMS + FCS + ETL [GPS, CAMERA, Boom Barrier, UHF Reader]



Digital Technology Provider

6.Smart HealthCare

Architecture



7.Smart Energy

Bus: [AVL]

Real time Information inside and about Buses IP based Camera and GPS

Route Optimization , AVL Real time tracking of the bus, MEMO

Mobile Application for Drivers to report incident and breakdown

Bus Stop

Real Time information at Bus stop, ETA to Bus stop

Variable Sign Boards, Kiosks using led or kiosk Stands

Mobile application telling bus stop and time to coming of Bus for Citizen

Bus Depot – Fleet Management System

Incident, Accident, Breakdown, Court and challan

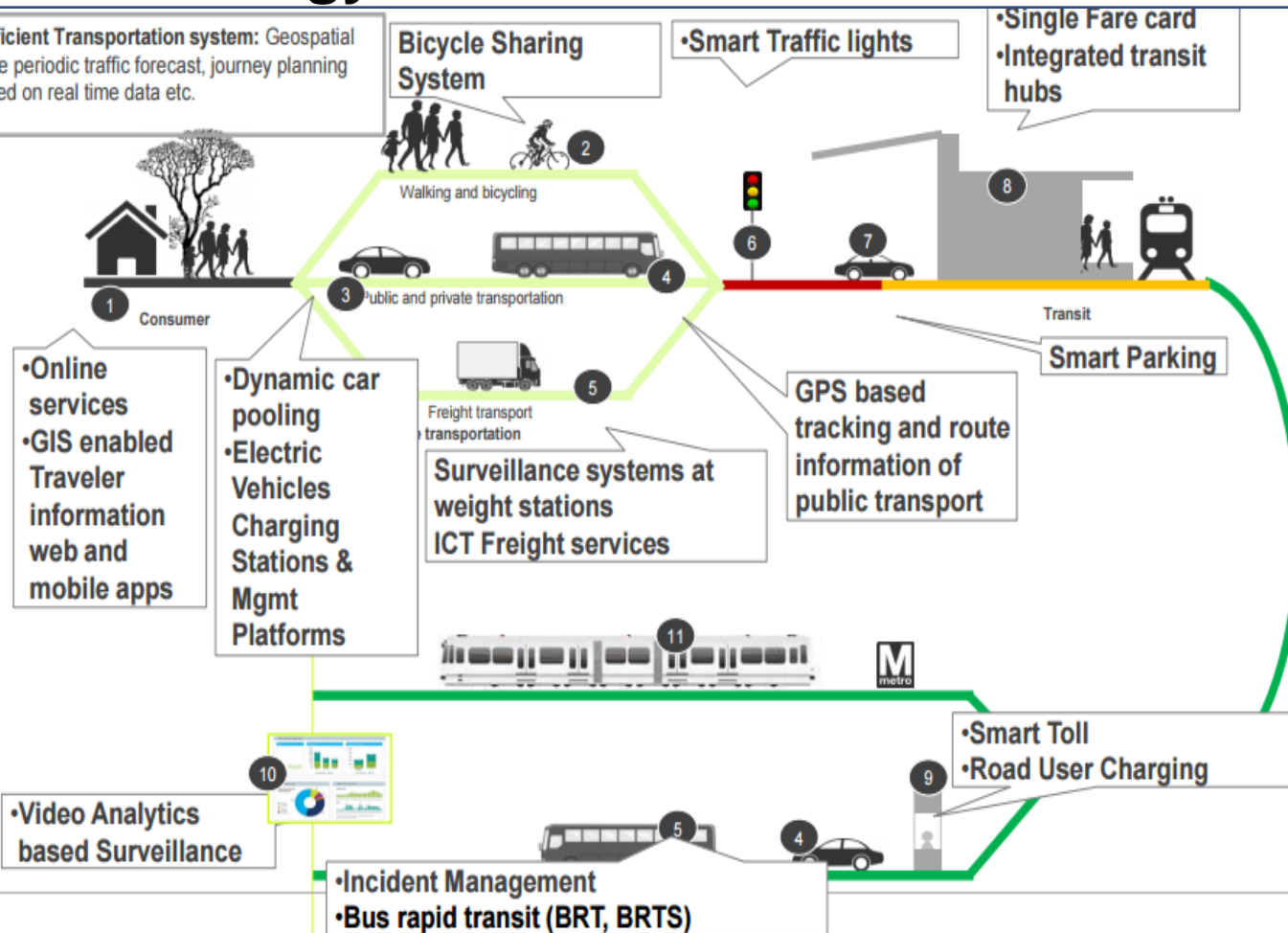
Driver Registration, Educational Check, Reference Check, Account Details

Driver Behavior Analysis Duty Assignment, Driver Penalty

Memo generation, Perform Fleet, Fleet Generation Purchase Order, GRN, Part Ident, Inventory, Part

Request

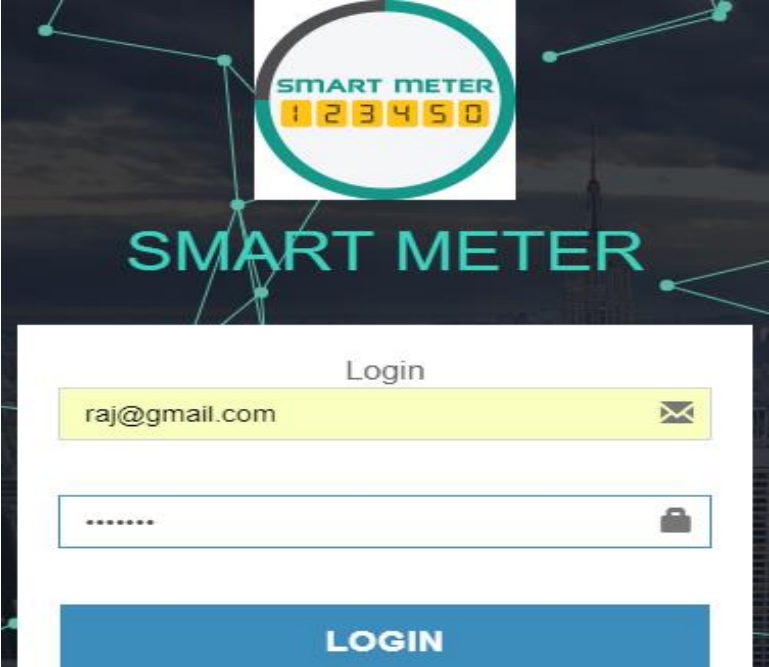
Geospatial enabled efficient Transportation system: Geospatial enabled services provide periodic traffic forecast, journey planning mobile applications based on real time data etc.



AVLS + PIS + VMS + FCS + ETL [GPS, CAMERA, Boom Barrier, UHF Reader]

7.Smart Energy

A.C. Monitoring



← → ↻ ⓘ Not secure | smartmeter.ecosmartdc.net/Report/MonthlyConsumption ☆ G | V

SMART METER

≡ SMART METER

RAJ Online

MAIN MENU

- Dashboard
- Masters
- Report
- User Management

Monthly Consumption Details

Copy Print Excel PDF Column visibility

Show 10 rows entries

Search:

Sr. No.	Society Name	Society code	Flat No	Owner Name	Meter Id	Accessible User	DG Consumption	Grid Consumption
1	Paras	SCTY/1	L-502	Vikas Sharma	861359035672748	Vikas L-502	0	0

Showing 1 to 1 of 1 entries

Previous 1 Next



Digital Technology Provider

7. Smart Energy-Light

Features

Smart Light Management



SmartCity Innogators

Multiple Users can Monitor and Operate

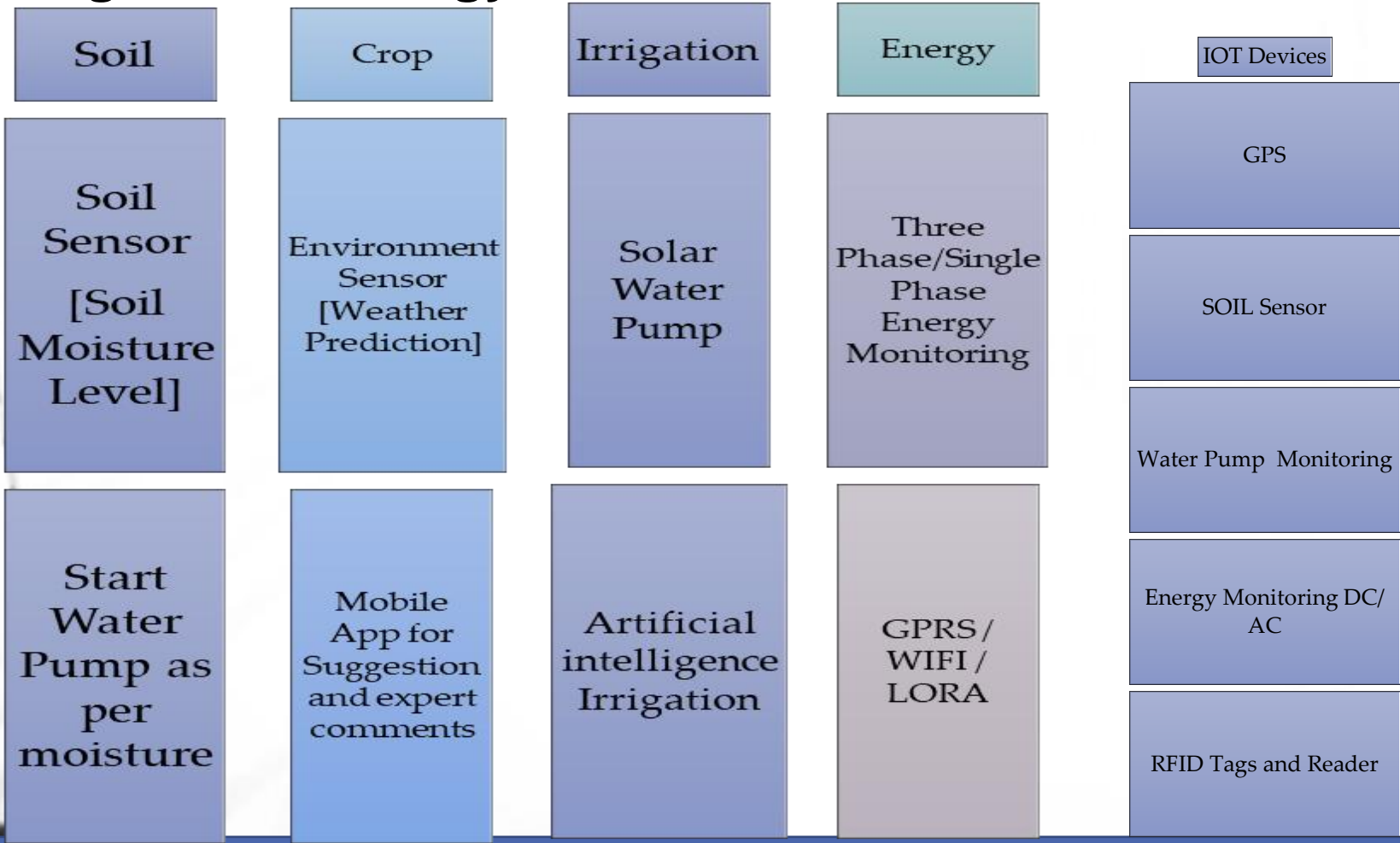


- Minimize Energy /usage
- Operate Street Lights in Three States[Dual Dim/ Bright/ Off]
- Automated Control make adjustment based on condition such as occupancy
- Policy driven central control mechanism
- Real Time Tracking and Management
- LED base smart Lightening to support automated Light and sensing
- Individual outdoor led light
- Detect Failure of LED Bulbs
- Infrastructure Solution
- LED base Smart Lighting fixture and Fittings
- Smart Controller Mechanism



Digital Technology Provider

8.Smart Agriculture



Mobile App enabling Farmer to know:

- 1.Water Details
- 2.Crop Details
- 3.Pesticide Details
- 4.Weather Details

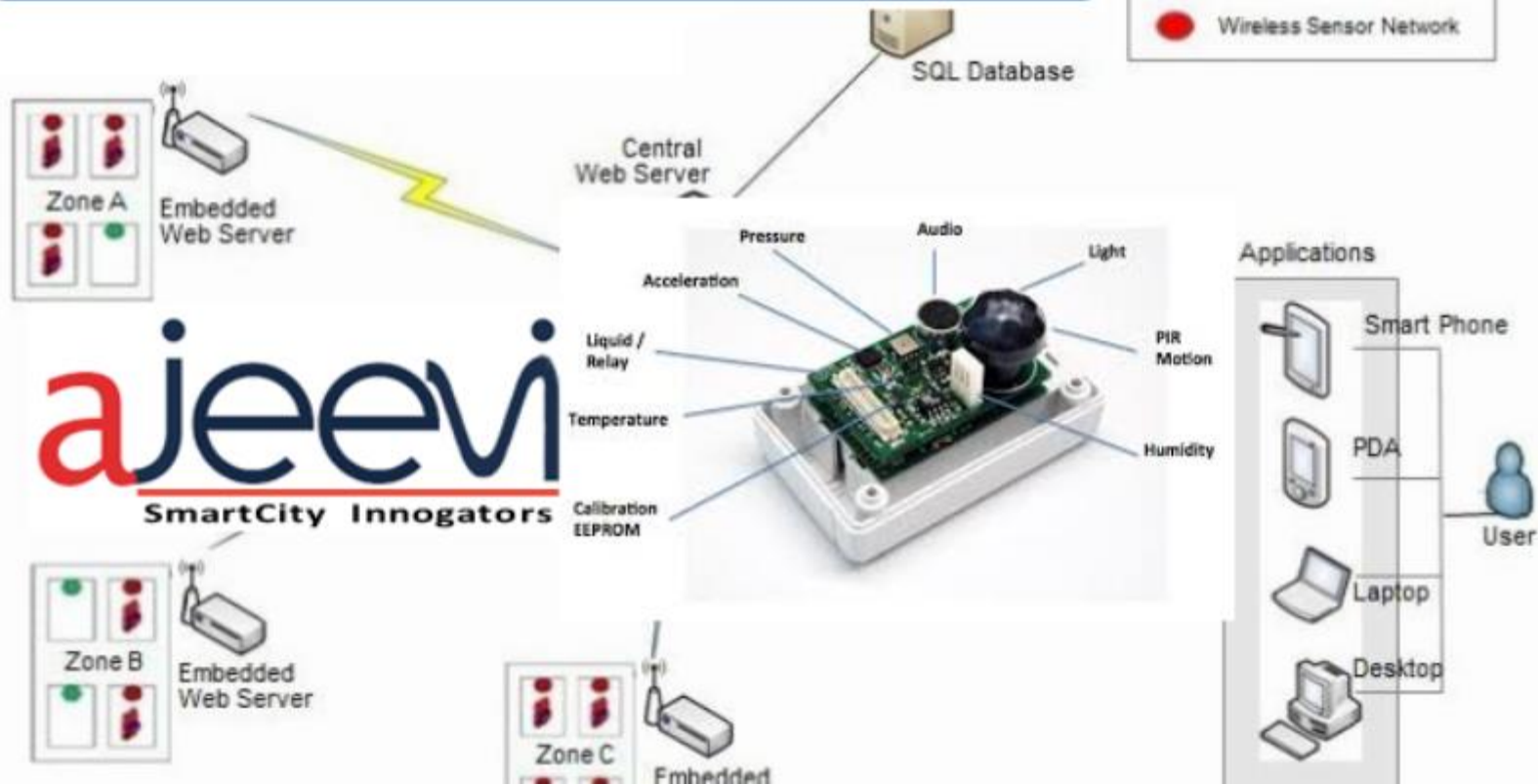
Review, Compare, apply for Crops

Data Analysis

Embedded Web Server

Field Safety Security

Smart Environment Sensors



Wireless Environmental Sensor

Collect Sensor Data

Send recorded information to Central System

Central System

Receive information from environmental sensor

Display information on real-time basis

Send information to mobile phone application

Save information in SQL Database

Mobile Device for Drivers

Connect to Central Webserver

Receive information from central system

Alarm Management

Digital display Unit

Receive information from Central Application



Digital Technology Provider

10. Governance

Mobile App for Citizen

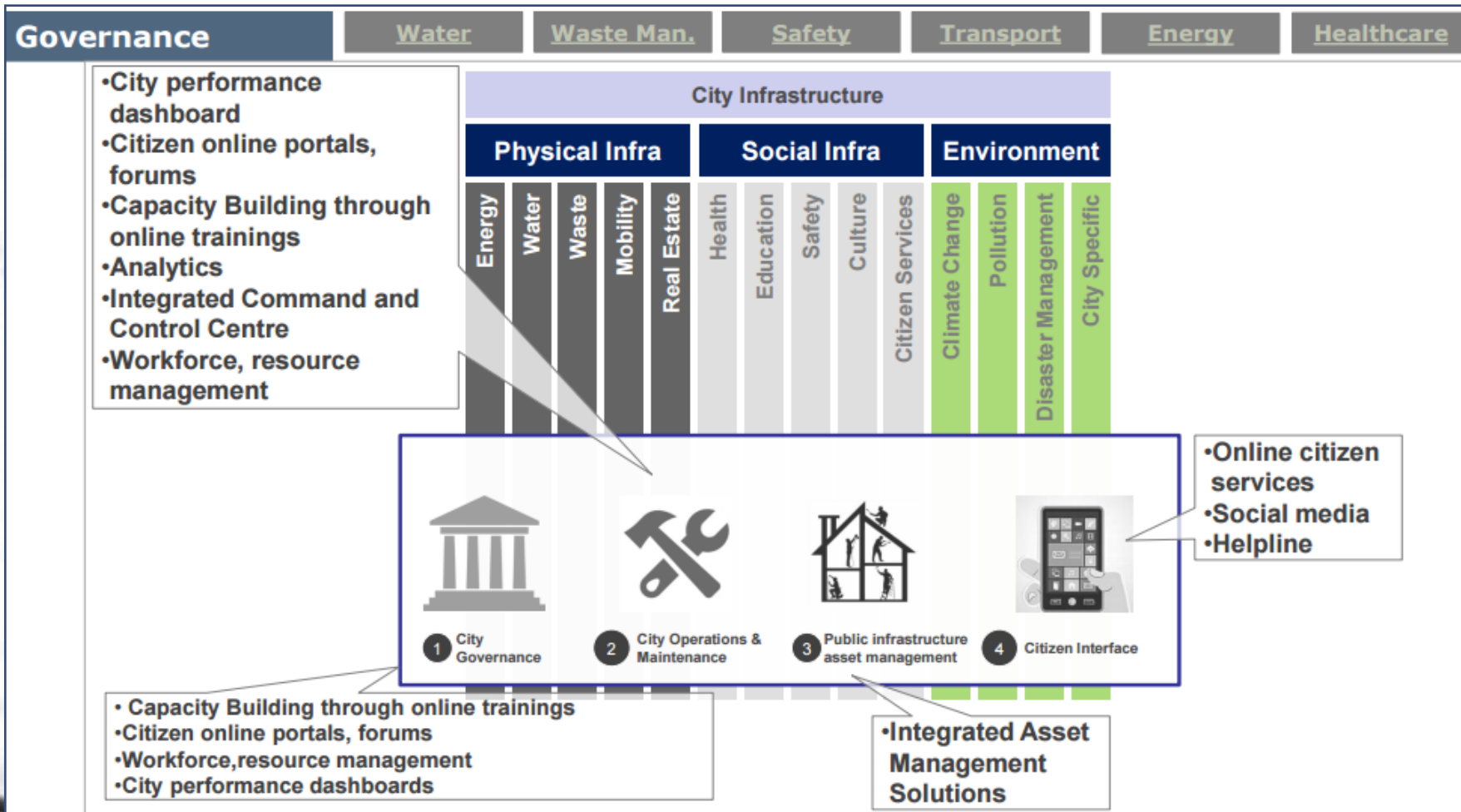
One window e-Registration
Activity

Field Tracking Apps

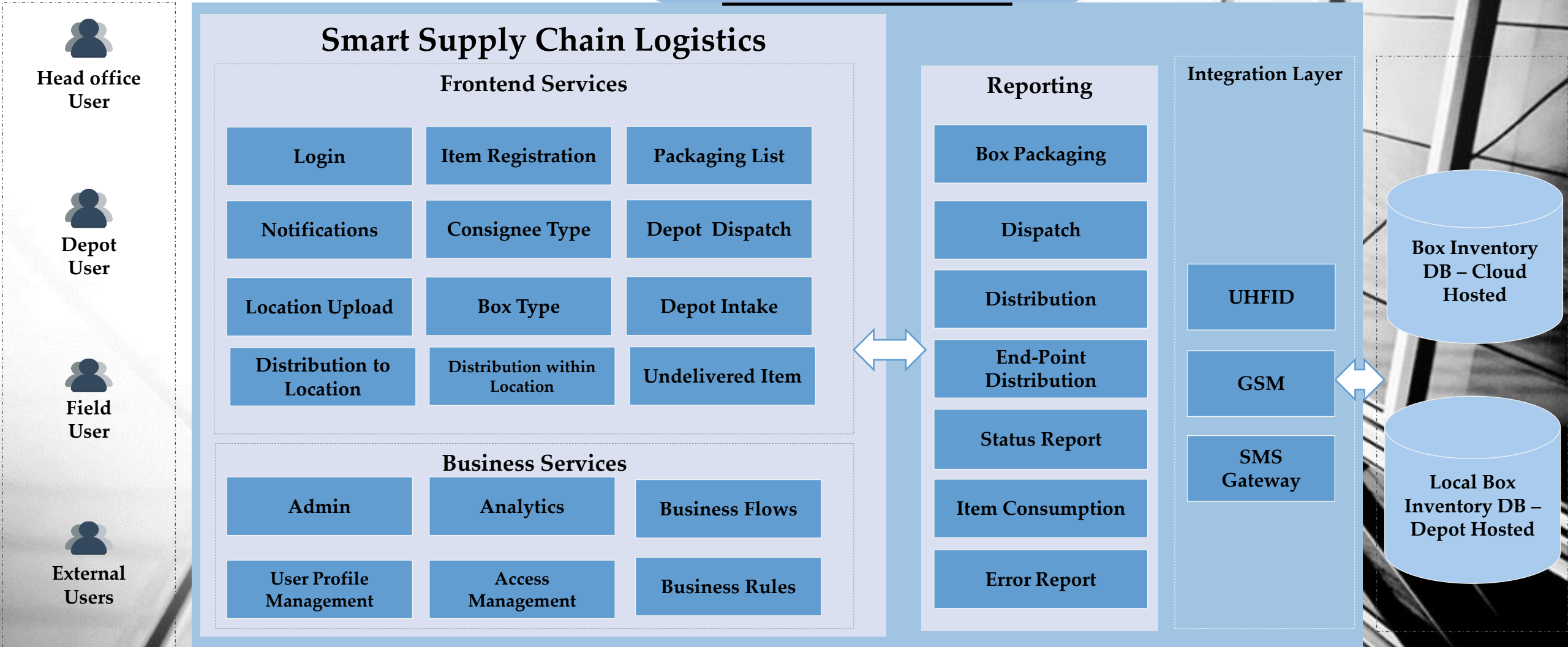
Public Government Distribution
App

City Surveillance

Data Analysis



AVLS + PIS + VMS + FCS + ETL [GPS, CAMERA, Boom Barrier, UHF Reader]





Digital Technology Provider

10.Smart Governance

Logistic Architecture

Smart Supply Chain Logistics

Frontend Services

Login	Item Registration	Packaging List
Notifications	Consignee Type	Depot Dispatch
Location Upload	Box Type	Depot Intake
Distribution to Location	Distribution within Location	Undelivered Item

Microsoft ASP .NET/C#/jQuery/Angular Js

Business Services

Admin	Analytics	Business Flows
User Profile Management	Access Management	Business Rules

Reporting

Box Packaging
Dispatch
Distribution
School Distribution
Status Report
Item Consumption
Error Report

Integration Layer

UHFID
XML/
JSON/
Entity
Frame
work
SMS Gateway

Box Inventory
DB – Cloud
Hosted

SQL Server

Local Box
Inventory DB –
Depot Hosted



Head office
User



Depot
User



Field
User



External
Users

10.Smart Governance

Logistic Features

H/O Supervisor

Assigns Unique Id to each Books/Box



1.Less Manual Work



H/O Supervisor

Assigns Unique UHFID Tag to each Box/Book



2.Improved Visibility



Loader Boys

Load the Box to Vehicle

at Head Office



3.Improved Planning



Loader Boys

Unload the Box From Vehicle

at Depot



4.Fast Location of Boxes



Delivery Boys

Takes the Boxes from Depot

to EndPoint



5.Improve efficiency



Delivery Boys

Deliver the Boxes to Schools & Take Confirmation



Endpoint In charge

6.Increase Accuracy

Real Time Monitoring Using UHFID

	Develop Training Plan	Develop Training Materials	Prepare for Testing	Testing	Train Users	Go Live Support
Activities	<ul style="list-style-type: none"> ▪ Determine training needs by audience ▪ Document training development and approval process ▪ Define module outline and module structure ▪ Determine roll-out plan ▪ Conduct module walkthrough ▪ Identify Business Training Liaisons, Super Users and trainers 	<ul style="list-style-type: none"> ▪ Design test case exercises ▪ Construct training schedule ▪ Develop process training materials ▪ Conduct training for Business Training Liaisons and Super Users on high level processes ▪ Plan logistics for training 	<ul style="list-style-type: none"> ▪ Conduct training for pilot team and other "Instructors" on high-level processes and screens required to execute parallel testing/pilot training 	<ul style="list-style-type: none"> ▪ Pilot team and other "Instructors" participate in parallel testing/pilot training ▪ Prepare trainers 	<ul style="list-style-type: none"> ▪ Incorporate lessons learned from pilot training presentation and exercises ▪ Produce training support materials ▪ Finalize training modules for End Users ▪ Conduct training for End Users ▪ Survey End Users on course content and facility 	<ul style="list-style-type: none"> ▪ Validate effectiveness of training program ▪ Follow-up training, as needed
Deliverables	<ul style="list-style-type: none"> ▪ End User Training Strategy and Plan ▪ Process module outline and structure 	<ul style="list-style-type: none"> ▪ Presentations on high-level process flows ▪ Exercises on test cases, where applicable ▪ Training schedule ▪ Training support materials ▪ Logistics Plan 	<ul style="list-style-type: none"> ▪ High-level processes and system training delivered 	<ul style="list-style-type: none"> ▪ Lessons learned through parallel testing/pilot training documented to be incorporated into overall training materials 	<ul style="list-style-type: none"> ▪ Detailed processes and system training delivered ▪ End User course evaluations 	<ul style="list-style-type: none"> ▪ Go Live and post-Go Live support (FAQs, quick reference materials, etc.) ▪ Business performance results ▪ Feedback on system, processes and training from End Users

- * ISO 9001, 27001 / MSME
- * CE Certified Products
- * In existence More than 5 Yrs.

Aadhar Enabled Bio Metric Attendance System—[AJV-AEBMAS-001]

OVERVIEW OF THE SYSTEM

- Aadhaar Certified Fingerprint and Iris scan
- Gray scale finger image data may be stored, recorded, or transmitted in uncompressed – bit packed form.
- resolution of the image data formatted and recorded for interchange should be the scan resolution of the image
- Each record shall pertain to a single Aadhaar entry and shall contain an image record (consisting of single view) for each of one or more fingers/iris scans; multiple fingers/iris scans (single image records).
- Live-scan plain Finger Impression type should be used
- Except the scanner driver, there should not be any requirement for loading any software/ license while plugging the scanner
- scanner driver should be API enabled to ensure compatibility with any application
- Should have inbuilt battery backup
- Data retention should be provisioned in case of power failure
- Should be able to mark time (hours) against the attendance of the worker



- * ISO 9001, 27001 / MSME
- * CE Certified Products
- * In existence More than 5 Yrs.

Smart Bin Level Sensor-[AJV-BLS-001]

OVERVIEW OF THE SYSTEM

- QR This device is fixed waste bin in garbage collection point.
- BIN ID with geo location can be sent to server on Realtime basis.
- This device is powered by Li-polymer 6000 MAh battery with 3.7 v, easily charged by any mobile charger Three to Five Years Battery backup when once charged with a regular mobile charger
- This device will automatically push encrypted data into a secure server.
- Data analytics tools of garbage collection
- LED indicator :- GPS, Sensor, GSM & Power
- IP65 enclosure to sustain in harsh environment
- Micro SIM and MicroSD card Support
- Alert/regular SMS or email can be sent to Garbage collection team.



DEVICE SPECIFICATION

- * ISO 9001, 27001 / MSME
- * CE Certified Products
- * In existence More than 5 Yrs.

Smart BOOM Barrier

OVERVIEW OF THE SYSTEM

- Boom Barrier is used to pass the authorize vehicles
- Vehicle is affixed with the windshield tag
- The boom barrier comes along with the remote
- This boom barrier will automatically opens as the vehicle with authorized tag comes.
- The device comes along with electromechanical & hydraulic combination
- LED indicator :- GPS, GSM & Power
- IP65 enclosure to sustain in harsh environment
- Micro SIM and MicroSD card Support
- Alert/regular SMS or email can be sent



- * ISO 9001, 27001 / MSME
- * CE Certified Products
- * In existence More than 5 Yrs.

Smart Data Transmission Device—[AJV-DTR-001]

OVERVIEW OF THE SYSTEM

- This device is installed on base Device.
- Device ID with geo location can be sent to server on Real-time basis.
- This device is powered by Li-polymer battery with 3.7 v, easily charged by any mobile charger
- This device will automatically push encrypted data into a secure server, 736 Bytes, 200 MW Max.
- Data analytics tools
- LED indicator :- GSM & Power
- IP65 enclosure to sustain in harsh environment
- Micro SIM and MicroSD card Support
- Alert/regular SMS or email can be sent .

- * ISO 9001, 27001 / MSME
- * CE Certified Products
- * In existence More than 5 Yrs.

Smart Fuel Level Sensor—[AJV-FLS-001]

OVERVIEW OF THE SYSTEM

- This device is fixed fuel tank in any vehicle and DG GENSET or any industrial fuel machine.
- Fuel tank ID with geo location can be sent to server on Real-time basis.
- Smart fuel level sensor works with our GPS tracking device to send live fuel monitoring data to our server. So that you can do real time monitoring of fuel volume and fleet tracking with increasing fuel costs, tracking fuel data is becoming a critical component of any cost saving exercise.
- Monitoring fuel level in tank online.
- The smart fuel sensor device is Gives notification you 24/7 access to fuel consumption .
- This device will automatically push encrypted data into a secure server.
- Data analytics tools of garbage collection
- LED indicator :- GPS, Sensor, GSM & Power
- IP65 enclosure to sustain in harsh environment
- Micro SIM and MicroSD card Support
- Alert/regular SMS or email can be sent to fuel monitoring team.



- * ISO 9001, 27001 / MSME
- * CE Certified Products
- * In existence More than 5 Yrs.

Smart VTS/GPS—[AJV-GPS-001]

OVERVIEW OF THE SYSTEM

- Ruggedized GPS Device
- Easy to Place, Unique Device ID, Proximity to know exact location
- GPS Device are placed on vehicles, any asset or Waste Bins
- Can be mounted with screws or can be pasted
- GPS along with GPRS
- Employee swaps the Reader & Tag data with time stamp is sent to Cloud
- This device works with the vehicle battery or its own battery
- The data is decrypted and displayed in analytics software tools using this analytics software



- * ISO 9001, 27001 / MSME
- * CE Certified Products
- * In existence More than 5 Yrs.

Smart Handheld RFID Reader — [AJV-HHR-001]

OVERVIEW OF THE SYSTEM

- This device is carried by door to door garbage collection person.
- Tag ID with geo location can be sent to server on Real-time basis.
- This device is powered by Li-polymer 5000 MAh battery with 3.7 v, easily charged by any mobile charger
- This device will automatically push encrypted data into a secure server, 736 Bytes, 200 MW Max.
- Data analytics tools of garbage collection
- LED indicator :- GPS, RFID GSM & Power
- IP65 enclosure to sustain in harsh environment
- Micro SIM and MicroSD card Support
- Alert/regular SMS or email can be sent to Garbage collection team.

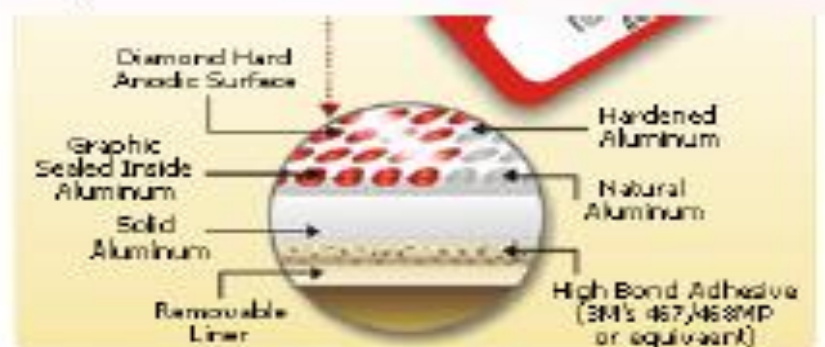


- * ISO 9001, 27001 / MSME
- * CE Certified Products
- * In existence More than 5 Yrs.

Smart QR Code-[AJV-QRC-001]

OVERVIEW OF THE SYSTEM

- QR code (abbreviated from Quick Response Code) is the trademark for a type of matrix barcode (or two-dimensional barcode).
- QR code uses four standardized encoding modes (numeric, alphanumeric, byte/binary, and kanji) to efficiently store data;
- QR code consists of black squares arranged in a square grid on a white background, can be read by an imaging device such as a camera, and processed using Reed–Solomon error correction until the image can be appropriately interpreted.
- The required data is extracted from patterns that are present in both horizontal and vertical components of the image.
- The QR Code is ruggedized and on metal plate to sustain harsh operational environment.
- Swachh worker scans the QR Code on the dustbins via QR Code Reader
- The QR Code data is pushed via GSM to Server



- * ISO 9001, 27001 / MSME
- * CE Certified Products
- * In existence More than 5 Yrs.

Smart RHF Tag—[AJV-RHF-001]

OVERVIEW OF THE SYSTEM

- Ruggedized RHF TAG
- Easy to Place
- Unique Device Number
- Readers are placed in Hand, or any asset
- Can be mounted with screws or can be pasted
- Asset/Employee swaps the tag the data with time stamp is sent to Cloud
- Tamper Proof
- The data is decrypted and displayed in analytics software tools using this analytics software.



- * ISO 9001, 27001 / MSME
- * CE Certified Products
- * In existence More than 5 Yrs.

Smart UHF Tag—[AJV-UHT-001]

OVERVIEW OF THE SYSTEM

- Ruggedized UHF TAG
- Easy to Place
- Unique Device Number
- Readers are placed on vehicles, any asset
- Can be mounted with screws or can be pasted
- Asset/Employee swaps the tag the data with time stamp is sent to Cloud
- Tamper Proof
- The data is decrypted and displayed in analytics software tools using this analytics software.



DEVICE SPECIFICATION

Sr. No	Parameter	Value
1.	Reading/Detection Range	5 Mtr. / 15 Mtr.
2.	Protocol	ISO18000-6B, ISO18000-6C (EPC GEN2)
3.	Frequency Range	Standard ISM 902~928MHz or ISM 865~868MHz, 860-960 MHz
4.	GSM / GPRS multi slot Class/mobile station	Class12, class B, Low power consumption.
5.	Operation Mode	FHSS or fixed frequency (set by software)

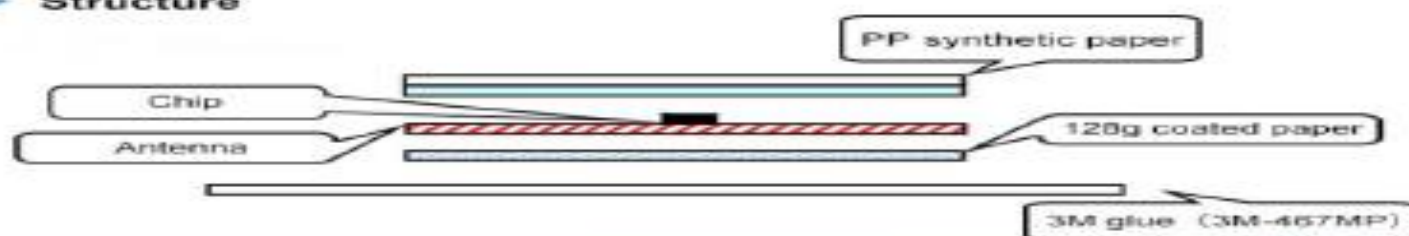
- * ISO 9001, 27001 / MSME
- * CE Certified Products
- * In existence More than 5 Yrs.

Smart Wind Shield Tag — [AJV-WST-001]

OVERVIEW OF THE SYSTEM



Structure



- Ruggedized UHF TAG
- Easy to Place
- Unique Device Number
- Readers are placed on vehicles, any asset
- Can be mounted with screws or can be pasted
- Asset/Employee swaps the tag the data with time stamp is sent to Cloud
- Tamper Proof
- The data is decrypted and displayed in analytics software tools using this analytics software.

DEVICE SPECIFICATION

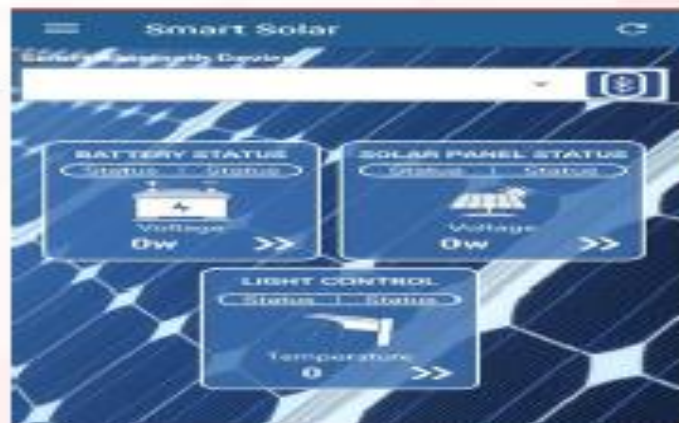
Sr. No	Parameter	Value
1.	Reading Range	5 Mtr. / 15 Mtr.
2.	Protocol	ISO18000-6B, ISO18000-6C (EPC GEN2)
3.	Frequency Range	Standard ISM 902~928MHz or ISM 865~868MHz, other frequency available
4.	GSM / GPRS multi slot Class/mobile station	Class12, class B, Low power consumption.

- * ISO 9001, 27001 / MSME
- * CE Certified Products
- * In existence More than 5 Yrs.

DC Energy Management Systems -[AJV-DCM-001]

OVERVIEW OF THE SYSTEM

- AJEEVI has designed the complete solution of DC monitoring system of Smart DC Solar energy that can be as simple as automating a light, so that it can be controlled by a Bluetooth remote control device .
- AJEEVI DC energy management can be used for monitoring and controlling in DC systems. These meters can measure a wide range of parameters such as voltage, current, power and energy (Battery as well as Solar). It supports bi-directional current measurement, digital inputs for switch monitoring and outputs for Bluetooth remote controlling as well as an over-range alarming feature for voltage and current. Large signals, such as voltage and current can be converted to smaller signal using analog output. All data in the meter is accessible Bluetooth using mobile App .
- DC Monitoring is a unique solution with add-on communication facilities for local & remote interfacing with Control/Data Center in its class.
- The device has wide range of Direct Current (multi-channel) & Voltage measurement and Various Electrical parameters like Power/Energy/Demand available to display & store into it.
- DC Energy monitoring also control Daylight Diming controls the artificial light depending on the available daylight. When enough daylight is available, the artificial light dims down according to how much light is available.
- In AJEEVI Smart solar light system connected Wireless Bluetooth control system, all street light are connected in a wireless Bluetooth network allowing them to be controlled from remote controls, pole switches or internet connected devices.



- * ISO 9001, 27001 / MSME
- * CE Certified Products
- * In existence More than 5 Yrs.

Smart Solar Light -[AJV-SSL-001]

OVERVIEW OF THE SYSTEM

- AJEEVI has designed the complete solution of lighting system of Smart Solar light that can be as simple as automating a light, so that it can be controlled by a Bluetooth remote control device .
- Daylight Diming controls the artificial light depending on the available daylight. When enough daylight is available, the artificial light dims down according to how much light is available.
- AJEEVI designed Occupancy sensors / presence detectors type of motion sensors. It automatically turns lights on when a object is occupied and off when a object is vacant.
- In AJEEVI Smart solar light system connected Wireless Bluetooth control system, all street light are connected in a wireless Bluetooth network allowing them to be controlled from remote controls, pole switches or internet connected devices.



Device specification

Sr. No	Parameter	Value
1.	Microcontroller	32bit Microcontroller,64kb Program memory 20kb RAM.
2.	I/O pins	Total 48 pins, 37 I/O pins Low power consumption 3.7V.
3.	GSM/GPRS Band	Quad band class A(1w@1800/1900mhz),class 4(2w@850/900mhz), Antenna signal 5db.

* ISO 9001, 27001 / MSME
* CE Certified Products
* In existence More than 5 Yrs.

Smart Vehicle Mounted Reader — [AJV-VMR-001]

OVERVIEW OF THE SYSTEM

- Ruggedized UHF Reader
- Easy to Place
- Unique Device Number
- Proximity to know exact location
- Readers are placed on vehicles, any asset
- Can be mounted with screws or can be pasted
- Asset/Employee swaps the tag the data with time stamp is sent to Cloud
- This device contains no battery
- The data is decrypted and displayed in analytics software tools using this analytics software.



DEVICE SPECIFICATION

Sr. No	Parameter	Value
1.	Reading Range	5 Mtr. / 15 Mtr.
2.	Protocol	ISO18000-6B, ISO18000-6C (EPC GEN2), IP 68
3.	Frequency Range	Standard ISM 902~928MHz or ISM 860~868MHz, other frequency available

- ISO 9001, 27001 / MSME
- CE Certified Products
- In existence More than 5 Yrs.

AJEEVI ICCC -[AJV-CCC-001]

OVERVIEW OF THE SYSTEM

- AJEEVI Smart Cities Framework enables Cities to Build a City Level Digital Platform that can integrate City Data from various connected systems - City Vehicle, Sensors from City Roadside Infrastructure and City Buildings and store the data in a manner that can be easily consumed by various City Applications and Citizen.
- Ajeevi has established centralized control command centre to The City Level Digital Platform harness advances in Digital Technologies - Social, Mobile, Analytics, Cloud and IoT in an integrated manner and transform the way citizen services is delivered across key perspective - Livability, Security, Mobility and Sustainability.
- Central control centre have an audio video conferencing unit in order to directly communicate for complain monitoring.
- smart waste collection, intelligent transport system, disaster management, parking management system and city surveillance are connected on the single-platform established in the ICCC.
- Display are capable of outfield with a wide array of inputs & outputs, including 4 HDMI ports, 3 USB ports, 1 Ethernet port, 1 RF input, Digital Audio output, RJ45, & RS232C Serial interface.



AJEEVI ICCC Smart City Solution



AJEEVI ICCC Software Solution For Navigating through big data,multiple IP or Analog Video Stream.

- * ISO 9001, 27001 / MSME
- * CE Certified Products
- * In existence More than 5 Yrs.

Smart 3Ø Energy Meter-[AJV-SEM-001]

OVERVIEW OF THE SYSTEM

- AJEEVI Smart meter is electrical measuring device that is used to record electrical energy consumed over a specified period of time in terms of units.
- AJEEVI Smart Three Phase Energy Meter is widely acknowledged by our clients for easy installation, capacity to withstand adverse power and negligible maintenance.
- AJEEVI Smart three Phase energy meter is Web Server and mobile apps based aided prepaid energy meter and post-paid energy meter which notified to amount of energy consumed ,bill payment status, and records correct energy with same accuracy.
- Latest ASIC and Microcontroller based digital Display technology with Low power consumption less than 1 watt. Meter works accurately under earth load condition. LED's indication for current reversal and earth load tampering. Immune to effects of external magnetic field as per IS : 13779.
- Both Side IP65 enclosure to sustain in the harsh environment.
- Micro SIM and Micro SD card Support.
- This device will automatically push encrypted data into a secure server.
- Data analytical tools of energy monitoring team.



Device specification

Sr. No	Parameter	Value
1.	Microcontroller	32bit Microcontroller,64kb Program memory 20kb RAM.
2.	I/O pins	Total 48 pins, 37 I/O pins Low power consumption 3.7V.

- * ISO 9001, 27001 / MSME
- * CE Certified Products
- * In existence More than 5 Yrs.

Smart 1Ø Energy Meter-[AJV-SEM-001]

OVERVIEW OF THE SYSTEM

- AJEEVI Smart meter is electrical measuring device that is used to record electrical energy consumed over a specified period of time in terms of units.
- AJEEVI Smart Single Phase Energy Meter is widely acknowledged by our clients for easy installation, capacity to withstand adverse power and negligible maintenance.
- AJEEVI Smart single Phase energy meter is Web Server and mobile apps based aided prepaid energy meter and post-paid energy meter which notified to amount of energy consumed ,bill payment status, and records correct energy with same accuracy.
- Latest ASIC and Microcontroller based digital Display technology with Low power consumption less than 1 watt. Meter works accurately under earth load condition. LED's indication for current reversal and earth load tampering. Immune to effects of external magnetic field as per IS : 13779.
- Both Side IP65 enclosure to sustain in the harsh environment
- Micro SIM and Micro SD card Support.
- This device will automatically push encrypted data into a secure server.
- Data analytical tools of energy monitoring team.



Device specification

Sr. No	Parameter	Value
1.	Microcontroller	32bit Microcontroller,64kb Program memory 20kb RAM.
2.	I/O pins	Total 48 pins, 37 I/O pins Low power consumption 3.7V.

- * ISO 9001, 27001 / MSME
- * CE Certified Products
- * In existence More than 5 Yrs.

Environmental Management System-[AJV-EVS-001]

OVERVIEW OF THE SYSTEM

- AJEEVI has designed environmental management system for monitor overall ambient air, temperature, CO₂, CO, NO₂, O₃, SO₂, noise quality, weather etc.
- Smart Environment Sensors gather data about pollution, ambient conditions (temperature and humidity), levels of gases in the city (pollution) and any other events on an hourly and subsequently daily basis.
- AJEEVI Smart Environment Sensors device able to communicate over Wi-Fi, GSM (3G & 4G) and on wired technology and easily access Third party for Raw data & Computed data.
- Device Measurement elements - Temperature, Humidity, Light, Noise, CO, NO₂, O₃, SO₂, pm_{2.5}, pm₁₀, CO₂, UVa, UVb.

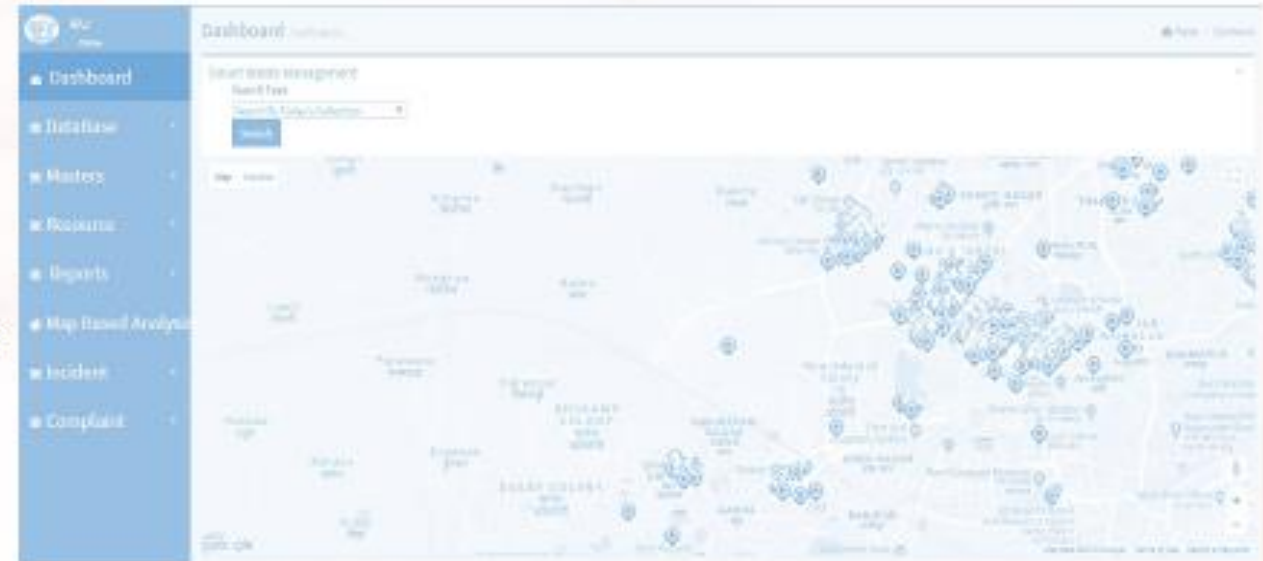


- * ISO 9001, 27001 / MSME
- * CE Certified Products
- * In existence More than 5 Yrs.

Smart ICT Solid Waste Mgmt. Software—[AJV-ICWMS-001]

OVERVIEW OF THE SYSTEM

- Ruggedized QR/RF/NFC TAG is placed at each house or Bins
- Swacch Worker or Vehicle reaches to each house or Bin with Vehicle mounted reader or hand held reader
- The tag is scanned and the data along time stamp is sent to web server
- Bin level sensor is placed in each Bin
- BLS identifies the level of the Bin, and send the alert to webserver
- The data is decrypted and displayed in analytics software tools using this analytics software.
- Integration with Weight Bridge
- Integration with Vehicle Tracking System
- Route Optimization
- Incident & Complaint Management
- SMS Gateway Integration
- GIS/GPS enabled Solid Waste Management System
- CCC Integration/ Citizen Complaint Management



- * ISO 9001, 27001 / MSME
- * CE Certified Products
- * In existence More than 5 Yrs.

Vehicle Tracking & Monitoring System [SWM]—[AJV-VTMS[SWM]-001]

OVERVIEW OF THE SYSTEM

- GPS tracking of the waste pick up vehicle for real time tracking
- Co-ordination between primary and secondary collection vehicles for transferring dump
- Route Optimization enables in reduction of trip time, fuel saving and serving more locations
- Record history of vehicle routes, attended sites and other details
- Monitoring & Reporting Application - reports of vehicles, garbage collection status etc.
- Alert / Alarm management
- Real time management of missed garbage transfer
- Daily report of Door-Door Collection efficiency combined with complaints raised by Public
- Monitoring & Reporting Application - reports of vehicles, garbage collection status etc.
- GIS Map Integration
- Garbage Collection Scheduling



SOFTWARE SPECIFICATION

Sr. No	Item	Details
1.	Vehicle Tracking in Smart Waste Management System	Monitoring of the vehicles used for smart waste management system through a web application for real-time level information for route optimization integrated with the automatic warning system which notifies when community bins is about to get full.
2.	Real Time Monitoring	GPS/GIS based Real-time monitoring of solid waste collection vehicles.

- * ISO 9001, 27001 / MSME
- * CE Certified Products
- * In existence More than 5 Yrs.

Weigh Bridge Monitoring —[AJV-WBM-001]

OVERVIEW OF THE SYSTEM



Waste Mangement Smart City Jabalpur

RAJ Online

Dashboard

Database

Masters

Resource

Reports

Map Based Analysis

Weigh Bridge Collection Details

Export To Excel

Center Number	Source Type	Transaction Date & Time	Total Weight(In Kg)	Total Energy Produced(In Kilo-Watt)	Total Disposed Qty.(In Kg)
EP-01	WEIGH BRIDGE	Friday, May 18, 2018 7:24 AM	1500	1000	2000
EP-02	WEIGH BRIDGE	Friday, May 18, 2018 7:34 AM	2000	1100	2300
WB-01	WEIGH BRIDGE	Friday, May 18, 2018 7:54 AM	1550	1050	2000
WB-02	WEIGH BRIDGE	Friday, May 18, 2018 7:34 AM	2200	900	2300
TS-01	WEIGH BRIDGE	Friday, May 18, 2018 7:29 AM	1100	900	2850
TS-02	WEIGH BRIDGE	Friday, May 18, 2018 9:24 AM	1010	850	2900

Waste Mangement Smart City Jabalpur

RAJ Online

Dashboard

Masters

CCTV Report

Excel

CCTV Number	Location
CCTV-01	12.0805231,77.5664666

Play Video

Play



Digital Technology Provider

Connect Us



THANK YOU

info@ajeevi.com, +91-9654323500

<https://www.facebook.com/ajevidigital/> <https://twitter.com/ajevidigital>

<https://www.instagram.com/ajevidigital/>

<https://www.linkedin.com/company/ajevidigital>

<https://www.youtube.com/channel/UCavAXoB6ZZT9ICUO6GbArmQ>

505, Corporate Park, Sector-142, Noida - 201305

Follow Us on:  YouTube     /ajevidigital

www.ajeevi.com